

# 2016 CONCRETE PUMPER'S

ISSUE NUMBER 13 ANNUAL MAGAZINE



TRAINING  
UPDATES

FOOD,  
DRINKS  
& BEER

FROM  
10am  
- 4pm

VOC  
REQUIREMENTS

ANNUAL  
GENERAL  
MEETING



## GOLD SPONSORS



equipcon  
construction equipment



## BRONZE SPONSORS



2016  
**CONCRETE  
PUMPER'S  
EXPO**

**THIS SUNDAY  
23<sup>RD</sup> OCTOBER**  
MELBOURNE SHOWGROUND



# TABLE OF CONTENTS

|   |    |
|---|----|
| 2016 CPAA Members   | 4  |
| Message from the Editors - Aiden Chilcott                   | 6  |
| Message from the CEO - Craig Heidrich                       | 8  |
| Message from the President - Andrew Mitchell                | 9  |
| Pump Connect Editorial                                      | 10 |
| High Risk Work Licences                                     | 13 |
| 2017 Shotcrete Certification                                | 14 |
| National Concrete Pumping Guidelines: Project Update        | 16 |
| The Latest Schwing Products                                 | 19 |
| Products on the Online Shop                                 | 21 |
| Schwing Editorial   | 24 |
| Equipcon Company Profile                                    | 27 |
| Get involved with The Pump Line...                          | 28 |
| NSW Government Spending Spree                               | 30 |
| National Heavy Vehicle Regulator                            | 30 |
| Mitchcon Taking Shotcrete to new heights – Andrew Mitchell  | 32 |
| CPE Machinery Editorial                                     | 33 |
| Construction Materials Industry Conference - CMIC 2016      | 34 |
| 10 Quick Facts you need to know about Equipment Finance     | 36 |
| Standards Australia Revision of AS2550.15 (Committee ME191) | 40 |
| Welcome to the 2016 Concrete Pumper's Expo                  | 41 |
| Toolbox Talks with Neville Barnes                           | 41 |
| 2016 Concrete Pumper's Expo - Run Sheet                     | 42 |
| 2016 Concrete Pumper's Expo - Layout                        | 43 |
| Meet the Exhibitors   | 44 |

## **President**

Andrew Mitchell

## **Chief Executive Officer**

Craig Heidrich

## **Concrete Pumping**

Association of Australia Inc.

PO Box 1194, Wollongong, 2500.

Phone: 1300 136 636

Fax: 02 4258 0169

Email: [info@cpassoc.com.au](mailto:info@cpassoc.com.au)

Website: <http://www.cpassoc.com.au>

## **Editor**

Aiden Chilcott

## **Editorial Coordinator**

Jake Latham

## **Contributors**

Breannan McMahon

Carol Wilson

Craig Heidrich

Andrew Mitchell

Glenn Porter

Danielle Porter

Carlo Gaurdini

Liesha Northover

Caroline Mevizzia

Barbara Anagnostiadis

## **Design**

Troy Hawkins - 101 Design

## **Print**

Hatem Ekiabi - Snap Printing

The Concrete Pumper's Annual Magazine is produced for Members of the Concrete Pumping Association of Australia and other interested readers.

The statements made or opinions expressed in this magazine do not necessarily reflect the views of the Concrete Pumping Association of Australia.

# **2016 MANAGEMENT COMMITTEE**

## **President**

Andrew Mitchell

Mitchcon Pty Ltd

## **Vice President**

Matt Boyer

Rapidcrete Pty Ltd

## **Treasurer**

Anthony Mattar

Belconnen Concrete Pty Ltd

## **Secretary**

Peter Loveday

Coastwide Pumping Pty Ltd

## **Committee Member**

David Bond

CPE Machinery Aust Pty Ltd

Barbara Anagnostiadis

Greg Torzillo

B&A Concrete Pumping Pty Ltd

Flowcrete Pty Ltd

# **NEW MEMBERS IN 2016**

- All Areas Concrete Pumping
- American Concrete Pumping Association
- At Hight Concrete Pumping Services
- Cogent Constructions
- Concrete Pump Repairs & Spares
- Coota & Sons Concrete Pumping
- Dash Concrete Pumping
- Dustless Blasting Pty Ltd
- Easy Biz Finance
- FWG Contracting
- Hunter & Coast Concrete Pumping Pty Ltd
- Insuregroup
- JLT Insurance
- JMG Concreting Pty Ltd
- Keller Plant
- Lion Pumping
- McClelland Concrete Pumping
- MG Civil
- N.L. Tucker & Associates Pty Ltd
- Northern Rivers Concrete Pumping Pty Ltd
- PBH Concreting & Excavation
- Pioneer Concrete Group
- Premier Concrete Pumping Pty Ltd
- Prisbel Concrete Pumping Pty Ltd
- SDC Concrete Pumping
- Sterling Concrete Pumping
- Team Concrete Pumping
- Yeppoon Concrete Pumping

# 2016 CPAA MEMBERS

- Advanced Foundation Solutions
- Advantage Concrete Pumping Pty Ltd
- All Areas Concrete Pumping
- All Concrete
- Always Concrete Pumping
- American Concrete Pumping Association
- Andalucia Construction Group Pty Ltd
- AOTA (All Onsite Training and Assessment)
- Arthur J. Gallagher, Australia
- Artistic Concrete Pty Ltd
- Azzurri Concrete
- B & A Concrete Pumping
- Baines Concrete Pumping
- Ballina Concrete Pumping
- Belcon Pumping
- Belconnen Concrete
- Beton Pumping Group
- BGC Concrete
- BKH Contractors
- Bolton Concrete Pumping
- Border Concrete Pumping
- Border Crane Consultants Pty Ltd
- Bowen Concrete Pumping
- Brad Shield Concrete Pumping
- Breeny's Pumping
- Burgess Concrete Pumping
- Caelli Constructions Pty Ltd
- Callaghan Concrete Pumps
- Canada Bay Concrete Pumping
- Cardale Concrete Pumping
- Cassowary Coast Concrete Pumping
- Cecil Park Concreting
- Chris Ross Concrete Pumping Pty Ltd
- Citywest Concrete Pumping
- CJR Concrete Pumping Pty Ltd
- Class CC Pty Ltd
- Classic Concrete Pumping
- CML Plant Hire
- Coastwide Pumping Pty Ltd
- Cogent Constructions
- Commercial Concrete Pumping Pty Ltd
- Concord Concrete Pumps
- Concrete Equipment Suppliers Aust
- Concrete Pump Engineering
- Concrete Pumping Sales & Equipment
- Coota & Sons Concrete Pumping
- CPE Machinery Pty Ltd
- CRC Pumping & Big River Crane Hire
- Darwin Concrete Pumping
- Dash Concrete Pumping
- De Martin & Gasparini
- Di Prinzie Concreting Pty Ltd
- Direct Concrete Pumping
- Diverse Concreting
- DTMT Construction
- Ducats Earthmoving Pty Ltd
- Dustless Blasting Pty Ltd
- East Coast Pumping Pty Ltd
- Eastment Concrete Pumping
- Easy Biz Finance
- Elite Mechanical
- Engineering Services & Non Destructive Testing
- Equipcon Pty Ltd
- Finlease (Aust)
- Flowcrete Pty Ltd
- Formaction Concrete Civils
- FWG Contracting
- Gateway Concrete Pumping Pty Ltd
- George's Concrete Pumping Services
- Get Pumped Concrete Pumping
- Great Northern Concrete Pumping
- Guardian Constructions Pty Ltd
- Gungahlin Concrete Services
- Haginia Hire Ltd
- Hanson Construction Materials
- Hart Concrete Pumping Pty Ltd
- Hiflow Concrete Pumping
- Highpeak Concrete Pumping
- HQC Pumping Pty Ltd
- HRD Readymix Pty Ltd
- HT & Sons Concrete Pumping Pty Ltd
- Hunter & Coast Concrete Pumping Pty Ltd
- Hy Spec Shotcreting
- Insuregroup
- Jag Concrete Pumping
- JLT Insurance
- JMG Concreting Pty Ltd
- John Beaumont Pty Ltd
- Kanefall Pty Ltd
- Keller Plant
- Kelveden Pty Limited
- La Pompa Pty Ltd
- Large Concrete Pumping Pty Ltd
- Leongatha Prestige Concrete Pumping
- Lew Butcher Concrete Pumping
- Lion Pumping
- Lipari Concrete Pumping Pty Ltd
- Local Mix Concrete
- Lotos Concreters Pty Ltd
- Mackay Concrete Pumping Pty Ltd
- Macquarie Concrete Pumping Pty Ltd
- Magill's Earthmoving & Concreting Pty Ltd
- Maximum Concrete Pumping Pty Ltd
- McClelland Concrete Pumping
- Mercedes Benz Commercial Vehicle
- Metro Masonry Contractors
- MG Civil
- Milop Design & Consulting
- Mitchcon Pty Ltd
- Multicrete Australia Pty Ltd
- N.L. Tucker & Associates Pty Ltd
- New England & N W Concrete Pumps
- Noble Concrete Pumping
- Omstar Pty Ltd
- Paki Concrete Pumping Pty Ltd
- PBH Concreting & Excavation
- Pioneer Concrete Group
- PM Concreting Pty Ltd
- Poolcrete Pty Ltd
- Powercrete Australia
- Precision Concrete Pumping (Aust)
- Premier Concrete Pumping Pty Ltd
- Prestige Concrete Pumping Services
- Prisbel Concrete Pumping Pty Ltd
- Procrete Group Pty Ltd
- Rapidcrete Pty Ltd
- Regor Concrete Pumping
- Roscoe Tumatias Concrete Pumping
- S & T Safety Training & Consulting Pty Ltd
- Saccardo Constructions
- SC Concrete Pumping
- Schwing Australia
- Schwing Concrete Pumping Pty Ltd
- Sidewinder Concrete Pumps
- Spurzing Pty Ltd (Orange Concrete Pumps)
- Sterling Concrete Pumping
- Stevenson Bros Plant Hire Pty Ltd
- STG Pumps Pty Ltd
- Stratacrete Pty Ltd
- Super Rain Pty Ltd
- T J Concrete Pumping Pty Ltd
- Team Concrete Pumping
- The Rix Group
- Toll Mining Services TMS Civil
- Topline Concrete Pumping
- Traino Group
- V & G Plant & Equipment
- V Constructions Pty Ltd
- Victor Concrete Pumping
- W Win Engineering Pty Ltd
- Yeppoon Concrete Pumping





**QUALITY - VALUE - PERFORMANCE - LONGEVITY**



**Putzmeister**



**TRELLEBORG**



**TRELLEBORG**



**Putzmeister**



**Putzmeister**

We've got everything you need for success  
with internationally trusted brands you can depend on  
at prices that pay off

**MACHINERY - ACCESSORIES - HOSE - PIPELINE  
GENUINE PUTZMEISTER WEAR PARTS**



**CALL US TO DISCUSS YOUR NEEDS**

1800 307 115 or 03 9931 4200

[cpemachinery.com.au](http://cpemachinery.com.au)



# MESSAGE FROM THE EDITOR

- Aiden Chilcott



Dear Readers,

In 2014, the reduced demand for residential buildings and commercial projects severely shook the Construction Services industry. Since then, business has been recovering, with activity booming throughout selected Australian states and territories. Today the Construction Services industry is estimated be worth \$7.9 billion by the end of 2016 and is forecasted to increase at 1.6% annually in the coming years. (Ibis World, 2016)

Increased business activity also brings light to numerous challenges, Australia wide, for associations, councils and other regulatory bodies. The challenge: new businesses or entrants into the Construction Services sector. Issues which we are regularly contacted about at the CPAA often regard the industry's current standards and licensing regulations that certify, educate and provide safety for concrete pumpers and other industry specific stakeholders.

In 2016, the CPAA, developed multiple projects to address these frequently asked questions and, in turn, we were able to provide members with as much piece of mind as possible. We also worked on developing standards and industry regulations that act as key steps towards safer, higher quality products and services. As membership numbers continue to increase, the vision of the Association continues to be supported, which is;

"To improve the standing of the industry by informing and educating our members through the provision of valuable advice as well as relevant products and services." (CPAA Strategic Plan 2014)

One of my primary roles at the CPAA is to spread important and useful knowledge about the industry through multiple publications such as this Magazine, including standards updates, changes to legislation, industry related news and event information. These publications are vital for members and readers who want to be educated about issues affecting the industry and those who desire to be 'in the loop'. I believe that the more people 'in the loop', the more challenges the industry can overcome together. For this reason, I encourage you to pass this edition on, subscribe to the bi-monthly The Pump Line eNewsletter and consider membership with the CPAA, because the more help we receive, the more that we can help you and the industry we serve.

Finally, creating this magazine alongside the contributors has been highly rewarding. I would like to personally thank all those involved, especially the Premium Gold Advertising Sponsors (Schwing, Equipcon and Flowcrete). As the project started in March, the changes to the industry, news and events have shaped the Magazine over the course of the year. This year's edition is packed with pages about news just for you. The last six pages of the Magazine have been set aside for the 2016 Concrete Pumper's Expo, to help delegates find their way around and keep up with the multiple events on the day.

I hope you enjoy this year's Magazine, I wish you all a safe Christmas and a happy new year.

*Aiden Chilcott*

Editor

2016 Concrete Pumper's Annual Magazine







## OUR HISTORY

Since 1982, Flowcrete has been designing and building Concrete Pumps for the tough Australian market as well as experiencing great success in the South East Asia Market place. From Trailer and Truck Mounted Line Pumps, to the now common place Truck mounted Boom Pump.

Flowcrete Pty Ltd sold its first JunJin Boom Pump in 1998 and have since then established offices in Queensland, Western Australia, Victoria and this year in Auckland New Zealand to support our ever increasing client base. No other Australian pump manufacture can match our presence.



**JXZZ42-5.20 on DAF CF85**



**JXZZ38-5.16 on FUSO FS52**

Flowcrete's Head Office in Mount Kuring-gai, NSW is where our production takes place. Every aspect of production is completed in house, from chassis modifications, paint, electrical and hydraulics, to specialised fabrication of equipment specifically requested by our clientel to ensure their pump is perfect for their needs.

Flowcrete aims to make the best use of all the available space, once a pump is mounted to the clients preferred truck, whilst ensuring every completed unit is road legal and conforms with all relevant OH&S standards.

Flowcrete prides itself on a 34 year history of delivering exceptional quality equipment, service and support to the Australian Concrete Pumping industry and most recently, the New Zealand Pumping industry. As we continue our growth, we continue our commitment to our loyal customers and thank each and every one for your continued support.

The Flowcrete / JunJin combination of mobile boom pumps has increased over the years based on the feed back from clients world wide and our range now includes booms ranging from 20 to 65 meters with pump modules capable of delivering from 60 to 200 cube per hour. And there is a boom configuration available to suit any purpose.



**JXZZ32-5.16 on DAF CF75**



# MESSAGE FROM THE CEO

- Craig Heidrich



Welcome the 2016 edition of the Concrete Pumping Association of Australia Annual Magazine. I want to update you on the Associations Strategic Plan implementation progress, commencing back in 2015.

Being the first ever formally written plan for the Association - the framework addresses organisational priorities into a series of objectives which in order; secure a strong longer-term fiscal sustainable position; building its profile and position in the industry as a credible and central reference point for all things 'concrete pumping' which then deliver new value-added benefits to its Membership for the next three years and beyond.

The overarching organisational objectives as priorities over the past three (3) years are:

## Financial and Organisation Sustainability

To invest in strategic projects that support targeted membership revenue growth whilst building the Associations positioning and profile and providing long term financial and organisational sustainability.

## Building our Profile and Positioning

To undertake activities that enhance the profile and positioning of the Association to signal to wider

industry stakeholders that our 'doors are open for business'.

## Membership Growth and Benefits

To support membership growth and development as well as adopted programs because it is vital for the organisation to develop and enhance relationships with key stakeholders at all levels of the membership.

In summary considerable progress has been made over 2015-2016 (see following Table). The National Management Committee and I look forward to your continued support and involvement to help us deliver on all the goals of the Association. In doing so we provide a strong, unified and respected voice for the concrete pumping industry across Australia whilst working to improve the professionalism, safety, standards and performance of the industry it represents.

*Craig Heidrich*

CEO - Concrete Pumping Association of Australia

## COMPLETED

- ✓ Evaluate membership categories, grades and sponsorship opportunities offered to our industry
- ✓ Grow sales, expand range and evaluate other quality 'Products and Services' offered to our industry
- ✓ Implement e-commerce enabled website to streamline online orders placed by users
- ✓ Implement CRM capturing industry stakeholders. Grow current membership by 105% over 3 years
- ✓ Promote the association is 'Open for Business' and engaging with members, industry stakeholders and government bodies
- ✓ Conduct networking events; Expo, Training, Workshops to improve professionalism of industry
- ✓ Review and implement improved governance structures

## IN PROGRESS

- ⚙ Build strong national leadership role and undertake projects which enhance the industry standing, e.g. represent members interests with key bodies such as Australian Standard 2550.15
- ⚙ To build our capability to reach concrete pumping related businesses and knowledge of operators within industry
- ⚙ Develop, Consult and Publish Technical information relevant to members, e.g. National Concrete Pumping Industry Guidelines
- ⚙ Investigate value added benefits for members. E.g. 'Concrete Pump Major Inspection Verification Scheme'





# MESSAGE FROM THE PRESIDENT

- Andrew Mitchell



In the last 12 months, membership has increased by 25%, with sales of the Association products and services increasing at a similar rate. This year the Association has successfully delivered on a series of training and certification programs, and provided crucial input into key legislative changes impacting on members. We have launched some new products and continued the rollout of the new look Association across Australia.

This year has also been exciting for the CPAA Team in terms of planning and organising the 2016 Concrete Pumper's Expo, and I'd like to thank all those involved in increasing the education, safety and certification of the Concrete Pumping industry, in particular, my fellow Management Committee, Advertisers, Sponsors and Members.

Your committee will be working hard over the coming months to finalise the next three (3) year strategic plan. Building on the main organisational objectives, the Association will continue to focus on the development of the professionalism of the concrete pumping industry as a valuable, important and integral part of the construction industry, providing time critical and dependable concrete placing skills.

I urge all members and non-members to speak with others involved in our industry and consider becoming active members of the Concrete Pumping Association. Through your participation we can work together, improving our skills and safety performance, translating into better business performance and value to the industry members.

*Andrew Mitchell*

President - Concrete Pumping Association of Australia

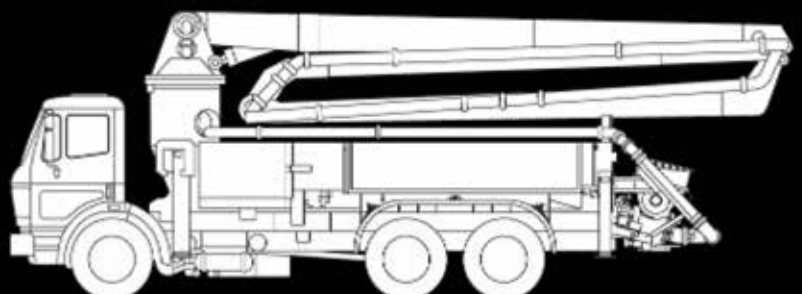
## CERTIFIED BOOM INSPECTOR

- Inspection of Concrete Pumps
- Over 25 years of experience
- Annual and major inspection on all makes and models
- Comply with Australian Standard & manufacture requirements
- Visual and Non Destructive Testing (Crack Testing) as per AS2550-15
  - Certified Schwing boom inspector
  - Certified Putzmeister boom inspector
  - Certified CIFA
- Certified Australian Institute for Non Destructive Testing
  - We come to your premises (Australia wide)

✦ **ESANDT**

**Jack Di Vitto 0415 242 393**

**Email: [jackdivitto@bigpond.com](mailto:jackdivitto@bigpond.com)**



# PUMPCONNECT

I've been involved in the concrete pumping industry for 20 years. I'm a member of the CPAA and I care a lot about what I do and the future of the concrete pumping industry.

After years of juggling jobs and trucks the same old way, by calling and texting other pumpers and wasting hours on the phone, I thought that there had to be a better way.

I've had to deal with every stressful situation you can think of... breakdowns, early morning sick calls, wrong pumps ordered for jobs, pumps held up on site due to poor concrete service, last minute bookings late at night... the list goes on. As Murphy's Law would decree, these issues always seem to occur at either 4:30am, 10pm or whenever it's a busy day for pumps.

I've lost count of the number of times I've been at an important social event when I'd get a call for a pump. I'd spend most of the night in the car park on the phone fielding dirty looks from all the other guests who don't understand the concrete pumping game. After I'd called and texted everyone in my contact list, I would then have to start at the top of the list again to see if anything had changed with them. Every time I'd think surely there is an easier, more time efficient way!

That's why I developed Pump Connect. I knew that it would help not just myself and my friends, but all pumpers, by making it easier for everyone to connect with each other. Users can post or find jobs in seconds and help each other out when they need a pump or need a job or simply just use it as insurance when 's\*\*t hits the fan'.

The app is very easy to use.

To **POST A JOB** just fill out the fields from the scroll down menus and at the click of a button it will be seen by hundreds of concrete pumpers. All the details are there: date, time on site, pump type, line length, cubes, job type, address (including map view), rates, payment method and contact details. This is so applicants can make a fully informed decision before deciding to apply for a job. There is even a comments box to write extra info; for example: "code for gate is 4334" or "beware, Dave's not wearing deodorant".

You also don't have to accept the first person that applies for your job. You may have multiple applicants so you can choose who you prefer. The unsuccessful applicants will receive a text message notifying them that they did not get the job and the successful applicant will get the text message; "you got the job".

To **FIND A PUMP** there are 3 easy steps.

1. Post job
2. Choose applicant and offer them the job
3. Applicant confirms/accepts job.

All 3 steps are simple push button functions and text notifications are sent at each stage. There's even a direct calling feature enabling you to speak to the job issuer or applicant at any time if you prefer.

To **FIND A JOB** just scroll through the list of jobs or inspect them via map view. Simply apply by clicking the 'Apply for this job' button. You can also refine your search by distance and pump type OR you can simply list your pump as available.

Another problem that I have experienced & one that most pumpers can identify with transpires when my customers decide to pour on the same day resulting in gaps in my working week. Once again calling and texting contacts was the only way to snag a job and you'd be restricted to your circle of contacts. Now with Pump Connect there's a better way to reach out and notify not just people you know but the broader concrete pumping community that you have a pump available.

Pump Connect has a **"LIST YOUR PUMP AS AVAILABLE"** feature. Members can access a scroll down list of available Boom, Line or Spray pumps in each state. Each listing shows the business name, suburb they are based in, type of pump and AM, PM availability. Availabilities can be edited or cancelled at any time and the phone number is displayed in a clickable button so you can call the pumper directly.

This app has the ability to join us together as a community to help make our working lives a lot less stressful.

Every pumper that you know and trust is someone that was once unknown to you. So broaden your circle, meet new pumpers, make new contacts and **become better connected!**

It's **FREE** to trial at the moment - no credit card details are taken but you need to enter valid business details including your ABN so that other pumpers using the app know that you are a legitimate business. Sign up via the website [www.pumpconnect.com.au](http://www.pumpconnect.com.au) and download the app from the iTunes or Google Play Stores.

After the **FREE** trial expires, a flat annual fee of \$477 +gst is charged for membership. No middle man, no commission, no hidden fees, just an App! Pick up one job using Pump Connect and it will have more than paid for itself, leaving you with 364 days to earn some cash. It's also a lot cheaper than most advertising!

It's been a challenge running Guardian Constructions Concrete Pumping and getting the app out there, but when we get great feedback from other pumpers about how Pump Connect is helping them, it's a fantastic feeling. It makes it all worthwhile.

We welcome any feedback or suggestions for improvements so please contact us via email; [pumpconnect@gmail.com](mailto:pumpconnect@gmail.com) or on 0414 781 860 if you have any questions.

Glenn Porter  
Guardian Constructions Concrete Pumping







# PUMPCONNECT

## FIND A PUMP

## FIND A JOB

## LIST YOUR PUMP



JOIN THE ULTIMATE  
**CONCRETE PUMPING NETWORK**

### QUESTIONS?

contact us at 0401 090 975  
[pumpconnect@gmail.com](mailto:pumpconnect@gmail.com)

**NO MIDDLE MAN**

**NO HIDDEN FEES**

**NO COMMISSION**

**JUST AN APP**



**Guardian**  
CONCRETE PUMPING  
DESIGNED IN AUSTRALIA  
by a Pump for Pumpies



Sign up for a **FREE TRIAL**

Standard features include Autec Remote Control, Vibrator Motor, Soft Push Changeover and Automatic Lubrication System.

The newly designed pumping system ensures a delicate, continuous and regular flow.

This new system gives you 80 or 60 m<sup>3</sup>/h concrete output respectively at only 26 strokes/min for longer service life and smooth, effortless pumping.

The butterfly valve technology guarantees an extremely effective system in pumping different kinds of concrete, with aggregates of every size.

Our modern PLC control is space efficient and easily correct errors. It also keeps any maintenance cost to a minimum.

Win Engineering does carry genuine spare parts and accessories for all WP60 and WP80 trailer and Line Pumps. All maintenances, services and repairs can be performed at our Milperra courts.



**WP60 TRAILER  
PUMP**



**WP60 DONKEY  
LINE PUMP**



**WP60 PTO  
LINE PUMP**



**WP60 SPRAY-  
MASTER LINE  
PUMP**



**WP80 PTO  
LINE PUMP**



ADDY'S BEARLAND PLACE, MILPERRA, NSW 2214  
TEL: 02 9771 9024 FAX: 02 9771 9252  
WEB: WWW.WINENGINEERING.COM.AU  
EMAIL: JON@WWW.WINENGINEERING.COM.AU

# MICHAEL J WHERRITT

Mobile 0412-248-997 ph/fax +61-2-65532006



## Concrete Boom Pump Engineering

**CERT 4 TAE 40110**

- Schwing & Putzmeister Factory Trained Certified Inspections
- Experienced in all Makes and Models of Boom Pumps
- Insurance Assessments, Valuations, Evaluations
- Operator Training all size Booms
- Concrete Pump Repair Specialist
- Certified Crane Inspector
- Application Engineer

Email: [mjwherritt@bigpond.com](mailto:mjwherritt@bigpond.com)  
[www.concretepumpersworld.com.au](http://www.concretepumpersworld.com.au)





# HIGH RISK WORK LICENCES

The Concrete Placing Boom Licence course is designed for those people who wish to operate a Concrete Placing Boom, whether vehicle mounted or satellite. The course is competency based, and successful applicants who attain the necessary competency will be eligible to apply for the issue of a National Licence through a local regulator or WorkSafe authority.

The course is broken down into two main segments, theory and practical exercises.

## The theory section includes:

- Full inspection and operator maintenance
- Acts and Regulations
- Pump Operation, concrete delivery via the boom
- Hand signals and Radio communications
- Site and Job Planning
- Pre-operational and Operational checks.

## The practical section includes:

- Planning and Hazard analysis
- Equipment inspection
- Pre operational checks
- Pump and Boom operations
- Cleaning and Safe Shut down
- Operational checks.

## Eligibility for a Licence

A person is eligible to obtain a licence when the person has:

- Demonstrated competency in the safe performance of high risk work under workplace conditions, and obtained the training, assessment, experience and qualifications required by the licensing authority.
- A person who is at least 18 years of age is eligible to obtain a licence. (Training may commence at an earlier age).
- A person who is already a licence holder is not eligible to obtain a second licence issued by any other licensing authority for the same class of work unless the licence is being renewed or replaced.
- A person whose licence has been suspended or cancelled in one State or Territory is not eligible to obtain a licence in any other State or Territory for the class or classes of work subject to the suspension or cancellation.

## Assessment Requirements

- An applicant must complete the relevant nationally endorsed unit or units of competency in a Training Package or an accredited course that meets the licensing requirements.
- The training and assessment must be delivered under the supervision of, or in partnership with, a Registered Training Organisation (RTO) in accordance with the Australian Quality Training Framework (AQTF). It must consist of relevant evidence of structured training, practical training & experience, and an assessment of the trainee's competency through the use of nationally approved assessment instruments.
- Practical training can be undertaken in the workplace as part of the productive work of the trainee, or in a training facility that includes a simulated work environment, or using a combination of both these training environments.

## Training Requirements

- Due to the physical nature of the course, some basic safety requirements are in place for your protection, and the training personnel. Equipment such as safety boots, shirt and pants (full cover - ankle to wrist), high visibility vest or clothing, suitable gloves and safety helmet.
- Training which takes place in the workplace under supervision may require different or additional PPE dependent upon the site rules and procedures, including items such as safety glasses and earmuffs.



**safe work australia**

# 2017 SHOTCRETE CERTIFICATION

The 2015 Shotcrete Certification course represented a big step forward for the Concrete Pumping Association of Australia (CPAA) and certification throughout Australia. With no recognised 'handheld' certification scheme for shotcrete nozzleman in Australia the CPAA contracted the American Concrete Institute (ACI) and the American Shotcrete Association (ASA) about delivering the course down-under.

After lengthy negotiations with the ASA the Association became the only authorised 'Host Organisation' outside the US to deliver its first course in Melbourne in partnership with the Concrete Institute of Australia – to educate and qualify members in the ACI shotcrete nozzleman certification.

The CPAA initially attempted to create a domestic nozzleman certification scheme for pumpers across Australia but due to the extensive time and cost of creating the certification through the Australian Qualifications Framework (AQF) and lack of Australian Standards, the decision was made to approach the American Concrete Institute (ACI) and the American Shotcrete Association (ASA) to bring their course to the land down under.

## 6 Reasons to attend...

1. Attain an internationally recognised shotcrete certification
2. Differentiate yourself from the competition in your industry
3. Become recognised and qualified for the skilled work that you do
4. Ask the tricky questions you were never sure about
5. Add another selling point to your resume for potential clients
6. Show employers that you not only have a commitment to the industry, but that you are educated and proven to be a certified nozzleman.

Following the 2015 event, we received a lot of interest to hold the course in Queensland, as some members could not justify the time and cost associated with flying. So that is exactly what we are doing.

In April the cogs really started turning and expressions of interest were flying through the door. Evolution Shotcrete has put their hand up to partner with the CPAA in assisting the planning of the event. The noteworthy assistance in communications, location scouting, manufacturing, all-round experience and knowledge provided by Matt Kamau and his team at Evolution Shotcrete has been highly valuable and greatly appreciated.

In order to receive the ACI certification, the participants must successfully shoot test panels, (determined by the ACI examiner) complete and pass the written examination. On the Saturday following the shooting, Charles will core the test panels at various positions in order to determine the quality of workmanship and the skills of the participant. All participants are welcome to come along and watch.

This course will be the Association's second technical education event. The maximum amount of attendees for the course is twenty (20) and there are still a few available spots remaining for interested attendees. The course is planned to be held in March - April of 2017. Specific dates coming soon.

For more information, contact Aiden on 1300 136 636 or [events@cpassoc.com.au](mailto:events@cpassoc.com.au) or alternatively visit the website: <http://www.cpassoc.com.au/certification/shotcrete-certification>







Experts in Concrete Applications

**P: (07) 5561 8885**

**M: 0401 553 118**

**[www.evolutionshotcrete.com.au](http://www.evolutionshotcrete.com.au)**

ABN 50 137 486 404

RESIDENTIAL | COMMERCIAL | MINING | CIVIL | RAIL

# NATIONAL CONCRETE PUMPING GUIDELINES: PROJECT UPDATE

Over the past several years a number of State Work Safe Authorities (SWS) and Non- Government Organisations (NGO's) have developed and published specific requirements for the safe operation, cleaning and maintenance of concrete placing equipment.

In part, each published document has lead to increased conflict with the increasing out of date AS 2550.15 (1998) and further fragmentation of operating practices across Australia. The aim of the National Concrete Pumping Guidelines project is review, adopt and develop a nationally consistent guideline on the safe operation, cleaning and maintenance of concrete placing equipment.

With the re-activation of Australian Standard AS2550.15 committee it is opportune to revisit the current Association 'Pump Safe Australia - Safety Manual' with the aim of considering the appropriateness of the current focus and scope of the safety manual including the expansion of the current document into a nationally consistent guideline on the safe operation, cleaning and maintenance of concrete pumping booms.

In the past, a number of State Work Safe Authorities (SWS) and Non-Government Organisations (NGO's) such as the Cement Concrete Aggregates Australia (CCAA) have developed and published specific requirements or guidelines for the safe operation, cleaning and maintenance of concrete pumping booms. In the case for SWS requirements these actions were driven primarily by incidents within their respective jurisdictions.

A particular focus within each of the guidelines is to articulate 'who should' and 'how to carry out major inspections', which is not an area the CPAA has addressed previously in any of its publications. Whilst filling this information void, the SWS and NGO guidelines have lead to some confusion between States regarding requirements for safe operation, cleaning and maintenance of concrete pumping booms, in particular requirements for how to carry out major inspections.

One implication to the Concrete Pumping Industry is the inconsistent standards across the States and Territories, which presents barriers to inter state business activity. Focusing on maintenance requirements under AS2550.15 within Section 8, there is considerable confusion between what is determined to be required versus what some operators, assessors, equipment distributors and sellers of concrete pumping booms are actually doing in reality to ensure equipment is correctly maintained and certified.

Allegations abound of major inspections being conducted fraudulently, with various industry participants suggesting inspections simply do not measure up to what is required for a safe and reliable concrete pumping industry. These claims are supported by incidents where issued documentation (certification) has been rejected at worksites by various industry participants (SWS, Unions and Builders). There are also considerable parallels within the Crane Industry.

Ultimately the whole industry suffers due to a perception of a 'least (low) cost' industry attitude where costs incurred result in worthless inspection certification. This may result in tragically unsafe plant leading to injuries in the workplace if the situation is not resolved..

Through the cooperative development of these guidelines we can provide clear and unambiguous guidance on industry expectations and clean out the blockages in the pump line. You can stay up to date with the latest news about the review by subscribing to our bimonthly eNewsletter here: <http://www.cpassoc.com.au/education/monthly-eblast>







**[www.flowcrete.com.au](http://www.flowcrete.com.au)**

boom pumps - line pumps - **tower booms** - trailer pumps  
used pumps - **spare parts** - accessories - sales & **service**



**FOR ALL NEW AND USED SALES ENQUIRIES PLEASE CONTACT:**

Greg Torzillo – M: 0414 534 017  
**NSW Corporate**  
Email: [greg.torzillo@flowcrete.com.au](mailto:greg.torzillo@flowcrete.com.au)

Horst Hendrich – M: 0424 228 535  
**VIC, SA, TAS**  
Email: [vicspares@flowcrete.com.au](mailto:vicspares@flowcrete.com.au)

Jeff Halliday – M: 0424 228 534  
**NSW**  
Email: [sales@flowcrete.com.au](mailto:sales@flowcrete.com.au)

David Schluter – M: 0414 534 020  
**QLD, WA, NT**  
Email: [qldsals@flowcrete.com.au](mailto:qldsals@flowcrete.com.au)

**AUSTRALIA'S NO.1 AND LEADING CONCRETE PUMP SUPPLIER**  
**HEAD OFFICE: 1-15 BEAUMONT RD, MT KURING-GAI, NSW**

Phone: **02 9457 8044** Website: [www.flowcrete.com.au](http://www.flowcrete.com.au) Email: [sales@flowcrete.com.au](mailto:sales@flowcrete.com.au)

**FOR ALL YOUR SERVICE AND SPARE PARTS CONTACT:**

NSW Unit 1, 15-17 Beaumont Road, Mt Kuring-gai  
QLD Unit 1, 35 Sodium Street, Narangba  
VIC Unit 13, 355-365 South Gippsland Highway, Dandenong  
WA 35A Boulder Road, Malaga

Ph: 02 9457 8044  
Ph: 07 3888 8988  
Ph: 03 8787 5844  
Ph: 08 9248 4811

Spare Parts - Consumables - **Certification** - Technical Support  
Pipeline Kits - **Placement Hose** - Service & Repairs - And More

**AUSTRALIAN OWNED AND OPERATED – ESTABLISHED SINCE 1982**



**JUNJIN**  
**CONCRETE PUMPS**

# THE LATEST SCHWING PRODUCTS

## SCHWING S43SX Truck Mounted Concrete Pump - Generation 3

Launched at Bauma 2016, the 3rd Generation SCHWING S43SX model delivers enhanced operating efficiency whilst maintaining its proven rock solid design, construction and operation. SCHWING's patented arc-shaped single section front outrigger spread has been reduced by 350mm. This unique design provides space for SCHWING's class leading long stroke pump kit. With 2500mm stroke and 250mm bore, the maximum output of 164m<sup>3</sup>/hr is delivered at an impressive 22 strokes per minute.

Whatever output you're pumping at, SCHWING's P2525 pump kit delivers it in >20% fewer strokes than other makes. Less strokes = less changeovers = less wear = longer service life = reduced running costs.

The 270° Z-fold between stages 4 and 5 of the 43 metre 5 stage RZ placing boom provides practical benefit in more typical job site configurations. 730° of slewing range provides unmatched flexibility and faster positioning on the job.

Built and mounted in Germany, the SCHWING S43SX III Truck Mounted Concrete Pump is registrable in all states and territories Australia-wide.

Call us for more details and to arrange inspection.





## SCHWING S 38 SX Truck Mounted Concrete Pump - Redefining Boom Geometry

The new SCHWING S38X model redefines industry standards on boom geometry.

The S38SX is a 5-Stage placing boom built in the proven, easy to use "Roll Fold" configuration. The true innovation in the boom design is the exceptionally large opening angles. You've never seen a Roll Fold boom offer up to 230° of articulation before, but here it is. It's the best of both worlds – big unfolding angles for inside and multi-level threading work; 730° slewing range for faster positioning and the unbeatable reliability and easy operation of the Roll Fold configuration.

Built and mounted in Germany on a twin steer cab chassis, SCHWING's patented robust single section arc-shaped front outriggers provide space within the frame for SCHWING's long stroke pump kit P2525. Your machine and your business will profit from over 20% fewer strokes than other pump kits. Less strokes = less changeovers = less wear = longer service life = reduced running costs. Add to this the exceptional fuel economy of the patented BIG ROCK Concrete Valve and Open Hydraulic Circuit and you have the formula for unbeatable value.



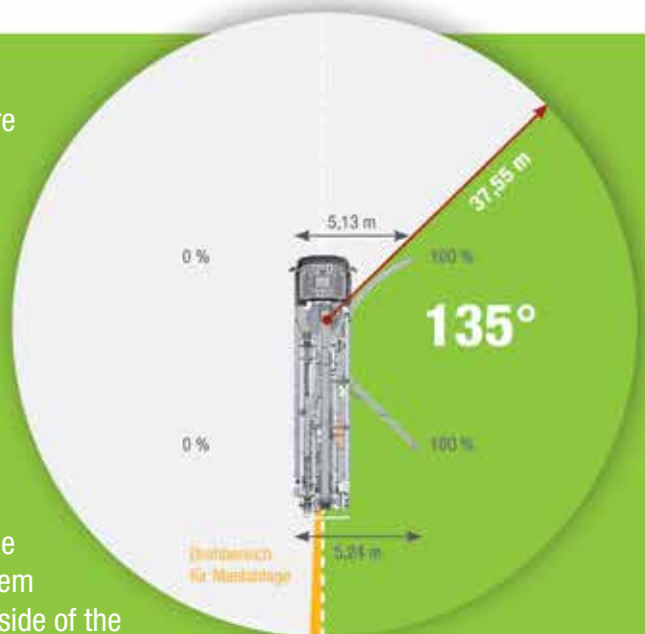
## SCHWING Single-Sided Stabilising Systems - EASy

New SCHWING Truck Mounted Concrete Pumps with slew ring gear are available with EASy Single-Sided Support systems. This includes our S32X, S36X and S43SX stock models.

Tight job sites create the challenge of safely stabilising the concrete pump in confined spaces, which often leads to short-rigging machines. In these circumstances, safe work responsibilities require operators to have a reliable control system that restricts the placing boom being slewed into an unsupported, unsafe position.

The horizontal outriggers on the working side of the machine must always be fully extended to their final positions, to prevent the machine from becoming unstable and tipping over. In operation, the EASy system provides an impressive 140° of working slew range on the supported side of the machine. EASy 200 is an additional module offering up to 200° of slew range when the front off-side outrigger is partially extended.

Thanks to SCHWING's class leading slewing ranges of up to 730°, the operator can slew the boom directly to the working position when in EASy mode. This time saving functionality is not available with other makes offering only 370° slewing range, which regularly necessitates first moving the boom into a vertical position so as to slew through the short-rigged side of the machine.





# INSURANCE SOLUTIONS TAILORED TO MEET THE NEEDS OF CONCRETE PUMPERS

Arthur J. Gallagher specialise in the development of leading edge insurance solutions to meet the needs of all concrete pumpers.

**As part of our Motor and Liability Insurance Package, special benefits include\*:**

- Sum insured includes Hoses and Remote Controls
- Third Party Property Damage Cover and Third Party Bodily Injury Supplementary Cover sum insured \$35,000,000
- Australia Wide Cover
- Local claims settlement
- Public and Products Liability at \$10,000,000 or \$20,000,000
- CTP 'Greenslip'
- Designated Broker for your Account.

For an obligation-free insurance review contact:

Russell Boucher

**02 4979 3350**

**0408 575 430**

[russell.boucher@ajg.com.au](mailto:russell.boucher@ajg.com.au)

David Sedgwick

**02 4979 3342**

**0407 885 987**

[david.sedgwick@ajg.com.au](mailto:david.sedgwick@ajg.com.au)

\*Benefits are to be read in conjunction with Policy Wording and Schedule.

[ajg.com.au](http://ajg.com.au)



**Arthur J. Gallagher**  
BUSINESS WITHOUT BARRIERS™



# PRODUCTS ON THE ONLINE SHOP

The range of CPAA products available through the online store provides pumpers nation-wide with a methodical way to maintain their equipment and stay up to date with the most recent safety regulations and CPAA products that are necessary across Australia.

## Full CPAA Membership

Full Membership is provided to any company that is registered to trade in Australia for the purpose of placing concrete, or assisting companies in the placing of concrete. These companies include Concrete Pumping Contractors, Manufacturers, Suppliers, Inspectors and Operator Trainers. To renew membership simply, login with your username, password and Member Number and pay online.

Associate Memberships are provided to companies that provide services to the concrete pumping industry in any form. e.g. Concrete mix, insurance, raw materials, tyres, advertising, management advisers etc.

## Office Copy and Operator Log Books

This 12 month Logbook is designed to be kept in the concrete placing equipment cabin for operator use. When the pages are complete, a copy of the completed page is transferred to an office copy. One book is required for each boom pump in your fleet. This Office Copy Logbook is designed for use in the company central office to store copies of six (6) years of completed forms from the Operator Boom Logbook. One book is required for each boom pump in your fleet with the time period depending on workloads.

## Stickers

The current Code of Practice requires that all models and types of concrete pumping equipment must conform to a minimum standard of visual safety warnings. The CPAA has designed State-Specific Safety Sticker Kits including instructions for sticker location on the unit. The Premium stickers use a high-grade vinyl with a digital printing process to apply the text and images. These stickers are suitable for use on high use concrete placing equipment.

## Safety Manual

The CPAA in conjunction with the American Concrete Pumping Association has produced a comprehensive Safety Manual that has been designed as a guide for the prevention of accidents. The Manual includes safety information for driving, operating and maintaining concrete pumps and related equipment. The book will fit into a normal size glove box and can be used for training and induction.

## Paraphernalia

The most recent products to hit the Online Shop are the CPAA work shirt and cap. The shirts come in sizes small to XXXL and are made from a durable, lightweight, breathable material.





# SPEND LESS TIME UNDER THE PUMP

WITH ROCK SOLID NEW SCHWING EQUIPMENT



Concrete  
Batching Plants



Truck Mixers



Truck Mixer  
Concrete Pumps



Truck Mounted  
Concrete Pumps



Stationary  
Concrete Pumps





**Successful pumpers know there's more to this business than putting concrete in one end and pushing it out the other. There's a world of difference in how profitably various makes can get the job done, day in day out, year in year out. It all comes down to having the right equipment.**

Your Concrete Pump is your business' greatest advertisement and success depends on how efficiently you and your gear can:

- Minimise Fuel Costs
- Minimise R&M Costs
- Maximise Reliability
- Maximise Safety
- Optimise Customer Service
- Optimise Equity in Equipment

With three generations of proven ROCK SOLID performance, SCHWING is the brand you can trust to deliver.

### **EXPERIENCE = TRUST**

As the industry pioneer, SCHWING has been manufacturing the world's most reliable and efficient pumps for three generations. Our lower running costs and higher resale values deliver unbeatable value.

### **THE PROOF IS OUT THERE**

Key components are developed, tested and made by SCHWING in Germany and Austria, using the finest steel from leading Western European producers. Proven technology and construction methods deliver optimal durability.

### **GET WHAT YOU PAY FOR**

SCHWING machines are built better to last longer, giving you rock solid performance. The proof is in the resale market and on job sites everyday, where old SCHWINGs continue to get the job done.

You can afford the SCHWING machine you've always wanted. Contact us today and spend less time under the pump!

**CALL US 02 4369 6884**



Separate  
Placing Booms



Concrete Recyclers



Sludge Pumps



**SCHWING  
AUSTRALIA**

CONCRETE • MIXING • TRANSPORT • PUMPING • RECYCLING • SOLUTIONS

# SCHWING EDITORIAL

SCHWING AUSTRALIA is the authorised distributor of New Equipment and Genuine Spare Parts and Accessories for the SCHWING Stetter equipment portfolio across Australia and New Zealand. SCHWING is renowned worldwide as the pioneer of the modern Concrete Pumping and Placing industry and its equipment remains the undisputed benchmark for reliability and efficiency. In this category, SCHWING offers a full range of Truck Mounted Concrete Boom Pumps and Line Pumps; Track Mounted, Trailer Mounted and Stationary Concrete Pumps; and Separate Placing Booms.

SCHWING AUSTRALIA is dedicated to supporting your SCHWING and Stetter equipment to maximise its service life and efficiency, so that you can spend less time under the pump and more time focussed on getting the job done as profitably as possible.

From New & Used SCHWING equipment, SCHWING Genuine Spare Parts, SCHWING Certified Training Seminars, Technical Troubleshooting, Engineering Consulting, Rebuilds, Annual and Major Inspections, SCHWING AUSTRALIA is committed to adding value to your business.

SCHWING AUSTRALIA performs major inspections of SCHWING equipment in full accordance with Australian Standard AS2550.15 Section 8.3.4 "Assessment for Service", known informally as the Six Yearly Certification.

Our expert Technical Services team are factory trained by SCHWING Germany and follow all of the manufacturer's recommendations. We use SCHWING's comprehensive technical library to ensure your SCHWING equipment operates to factory specifications.

Based on many years of experience, we prepare a detailed, costed scope of works and we take you carefully through every detail prior to the commencement of the job. Many customers take the opportunity to have additional repair and maintenance works completed while the "Six Yearly" is being undertaken, all of which is discussed and agreed prior to commencement. Any additional issues found during the inspection process are documented and shared with you in the form of a written variation. These are immediately discussed with you and a way forward is agreed prior to continuing works.

Upon booking your inspection, our extensive SCHWING Genuine Parts inventory is checked to ensure that typical items required for your major inspection are in stock as needed. Only SCHWING Genuine Parts are used during the certification works to optimise service life and ensure the machine performs as designed, to maximise the return on your investment.

As the Australian Standard dictates, SCHWING AUSTRALIA's scope of work incorporates the complete dismantling of the placing boom, outrigger members and turret assembly to enable a thorough inspection. To this end, all critical inspection areas are grit blasted to ensure that a detailed NDT crack test can be performed. Further, all load bearing hydraulic cylinders are completely stripped; fully inspected, re-sealed and pressure tested prior to being re-installed in the machine

Works are completed in a "multi-stream" format to minimise your machine's downtime. For example, stripping and re-sealing of hydraulic cylinders occurs at the same time as the placing boom is grit blasted and NDT crack tested. Several specialist activities are performed during an "Assessment of Service". SCHWING AUSTRALIA manages the engagement with any 3rd party providers, ensuring they have suitable credentials and that they perform the works competently.

The machine is re-painted according to your specifications, using high-grade two-pack undercoat and polyurethane top coat, maximising the life of the paint surface and returning the machine to its former glory. Throughout the inspection process, SCHWING AUSTRALIA seeks to provide a timely and "hassle-free" service, always striving to achieve the highest possible quality and technical standards as efficiently as possible, to maximise the service life of your machine and to get you back on the road sooner.

Concrete Pumps and Placing Booms are High Risk equipment and Concrete Pumping is High Risk work. By investing in quality SCHWING equipment you've already set your business for success with reliable, efficient and economical machinery. Minimise the ongoing risks to your business and most importantly your people, by ensuring that your SCHWING is maintained using SCHWING Genuine Parts and inspected according to Australian Standards and manufacturer's specifications by the SCHWING experts.





# SCHWING NEW MACHINES, READY TO ROLL

Competitive pricing up front, lower running costs and higher resale value combine to create unbeatable value.



## SCHWING S43SX - LONG STROKE PUMP

- 43 metre compact 5 stage RZ boom with 730° slewing range. 270° Z fold between 4th and 5th stages for optimum utilisation on site. Includes Esser Twin Pipe, End Hose Squeezer and 360° Rotating Outlet
- Industry leading twin circuit pump kit with long 2.5m stroke and 250mm bore. The BIG ROCK Concrete Valve delivers 164m³/hr at an incredible 22 strokes per minute. That's 40m³/hr at only 5 strokes per minute, for low wearing, low stress, long-life pumping!
- Fully imported from Germany on 440hp Mercedes Benz Actros 4144
- Loads of SCHWING optional extras available



## SCHWING S36X ON 6 WHEELER

- 36 metre 4 stage RF boom with 730° slewing range; genuine German made Esser Twin Pipe, End Hose Squeezer and 360° Rotating Outlet
- Big boom with compact footprint; 6.2m "X-Type" at the front and 5.7m "H-Type" rear outriggers
- Twin circuit pump kit (P2023-130/80 535 RB) for maximum rated output of 158m³/hr at 31 strokes per minute. Open circuit hydraulics and BIG ROCK Concrete Valve ensure smooth delivery, long service life and low running costs whilst handling the harshest mixes
- Our biggest boom on a single steer Mercedes Benz cab chassis, fully imported from Germany
- Loads of SCHWING optional extras available



## SCHWING S28X - RZ BOOM WITH TWIN CIRCUIT PUMPKIT

- 28 metre 4 stage RZ boom with 370° slewing range. 270° Z folds at the 2nd and 3rd knuckles. Esser Twin Pipe, End Hose Squeezer and 360° Rotating Outlet are all on board
- Low unfolding height (5.85m) and compact footprint (5.96m at front; 3.6m at rear) is ideal for tight streets, cramped job sites and inside work. Shortened wheelbase makes it even better in tight spots
- Now with twin circuit pump kit (P2023-130/80 535 RB) and BIG ROCK Concrete Valve, same as S32X and S36X for smooth, efficient, low cost, long life pumping
- Built and mounted in Germany on 16 speed Mercedes Benz Axor 2633
- Loads of SCHWING optional extras available

## Choose New SCHWING Equipment & Genuine Spare Parts

Certified Training Programs ■ Technical Trouble Shooting ■ Rebuilds  
Engineering Consultation ■ Annual Inspections & Recertifications

Email [contact@schwing.com.au](mailto:contact@schwing.com.au) [www.schwing.com.au](http://www.schwing.com.au)

CALL NOW 02 4369 6884



**SCHWING**  
**AUSTRALIA**

CONCRETE • MIXING • TRANSPORT • PUMPING • RECYCLING • SOLUTIONS



# Milop Design and Consulting Pty Ltd

Research, development, analysis and design of heavy construction and concrete pumping machinery, tower cranes, lifting hoists and other mechanical equipment



## For the concrete pumping equipment Milop engineers are your experts for

- analysis, design and modification concrete boom pumps, tower placing booms and support steel structures
- inspection, certification and assessment for continued operation
- testing and certification for "one side operation"
- machine failure analysis
- design verification of the truck concrete boom pump and tower placing boom in accordance to new regulation

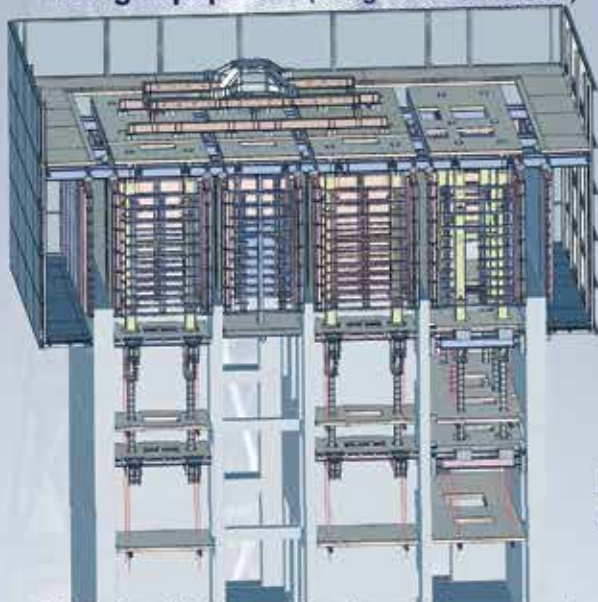
**Tower cranes** (AS 1418, design, modification, analysis)

**Mobile drilling rigs** for mining exploration  
(AS and API standards)

**Pressure vessels design** (AS 1210 and ASME)

**Mining industry** (underground equipment)

**Lifting Equipment** (design and verification)



**Structural formwork, Jump form system**  
selfclimbing, design and analysis.

Our engineers have 30 years experience in development and creatively applying their understanding of engineering principles. They have several patented solutions in cranes industry concrete placing boom and construction equipment.

**Drilling rigs** for mineral  
exploration and mining



## Engineering services

- analysis of steel structural and mechanical components using the finite element method and conventional calcs
- solving thermal problems using classical methods and finite element analysis
- expert witness services



Professional Engineers  
Members of Institution of Engineers Australia

To learn more about our service, or informally discuss your technical issue with our engineers call us from 9 am - 6 pm EAT Mon - Fri

**Milop Design and Consulting Pty Ltd**

PO Box 3345, Wetherill Park, NSW 2164

ph. (02) 9823 4818, fax (02) 9823 8578

mob. 0413 424 819

[milop@tpg.com.au](mailto:milop@tpg.com.au); [www.milop.com.au](http://www.milop.com.au)





# equipcon COMPANY PROFILE

## SAFETY FIRST

When it comes to safety, Equipcon is always looking for ways to reduce potential hazards to customers and operators. We want to guarantee the safety of all machinery operators, without reducing machinery practicality. With more than 40 years' experience out in the field, we know the dangers that can be present when operating pumps, and it is to this end that Equipcon works closely with Zoomlion Research and Development to ensure our products are not only state-of-the-art, but reliable and safe.

With a zero harm company objective, we not only focus on the safety of the equipment supplied to our customers, we also actively concentrate efforts on the safety of our employees. Equipcon holds current ISO certification for Occupational Health and Safety (BS OHSAS 18001:2007 and AS/NZS 4801:2001) as part of our Integrated Management System certified by QAS, and all staff are trained in the Standard. Our customers value our attention to detail and the importance we place on safety as much as we do. Here's what Chris Rakich from the Meales Group in Western Australia has to say:

*We have been using Equipcon for our high rise equipment for years now and have purchased Zoomlion high-rise equipment because it is very user-friendly. It provides a safe work environment for our employees. The Zoomlion brand offers an important safety feature in its high-rise equipment! Safety of our employees is our number one priority and this feature assists us with providing a safe work environment.*

— Chris Rakich, Meales Group —

## YOUR TRUCK YOUR CHOICE

As your business grows so do your concrete pumping needs. We know this because we've worked in the field and on the pumps, so we understand your challenges and day-to-day operational needs from the ground level and up.

So, whether you want a personalised service for the maintenance and repair of your machinery, or you're looking for a new pump that will take the 'hard' out of your work, Equipcon is the concrete pumping equipment specialist for you.

Make Equipcon your preferred dealer today and we'll look after you. A whole new world is just a phone call away.

## THE FUTURE HAS ARRIVED

Thanks to our loyal customers, Equipcon has experienced continuous growth, and we're always looking towards the future. In late 2017, Equipcon will be relocating to a bigger, better-equipped workshop, which will comprise more than double our current workspace. It's an exciting time for us, as we hope to continue our growth and provide even better service and support to our valued customers.

## BRAND NEW PREMISES OPENING SOON!

*Connect with Equipcon by joining the Equipconconversation on Facebook!*

*We've always got interesting things to say!*



Equipcon offers Zoomlion finance to approved purchasers.  
Terms and conditions apply.

# GET INVOLVED WITH *THE PUMP LINE*

The Pump Line is your tool to keep the concrete pumping industry up to date with current news and issues from across the country and globe. Published ten times a year, circulated to over 1,300 key industry businesses, it's an excellent way to effectively market your business.

The marketing of your business paired with a nationally recognised industry Association can not only improve your businesses professional image but also offer your business potential new leads and profits for the future.

## **Sponsoring The Pump Line: \$200 - \$1,000**

Sponsorship of The Pump Line is highly flexible and caters for all marketing budgets. The sponsoring option provides short and long-term marketing and advertising opportunities.

### **Sponsorship includes:**

- Logo within the side-banner
- Links embedded within your logo to your company website.

## **Feature Article in The Pump Line: \$500**

The Feature articles allow businesses to share company specific products, services and news fast. Limits apply to article size, editorial content and frequency.

### **Feature articles include:**

- Feature article in body of The Pump Line
- Full feature article posted on Association website
- Twitter and Facebook promotion
- Links to your company website
- Your contact details posted on our website.

## **SUMMARY**

A valued activity of the Association is ensuring that our 1,300+ industry contacts are kept abreast of innovation, technical developments, training, education, workplace safety and regulatory changes. Subscribers to The Pump Line receive a bi-monthly electronic update of current news and issues from across the country and around the world. Since 2014, our bi-monthly updates have been distributed resulting in a reach of over 27,000 points of contact. This powerful communication tool, coupled with the Associations' well qualified industry database is opening its doors to provide advertising and feature article opportunities.

printing  
design  
websites  
brochures  
e-marketing  
posters  
business cards  
and more...

Let's **build your  
business** starting now



print design websites

**Snap Wetherill Park**  
Unit 1a / 31 Elizabeth Street  
Wetherill Park NSW 2164  
**P:** (02) 9609 5577  
**E:** wp@snap.com.au  
wp.snap.com.au



# SO... YOU WANT TO PUMP HARD, FAST AND A HELL OF A LONG WAY?

*Better buy yourself a*

## TRANSCRETE



WHAT YOU WILL GET IS...

✓ **RELIABILITY**   ✓ **TOP FUEL ECONOMY**   ✓ **USER FRIENDLY PUMPING**   ✓ **HIGHEST RESALE VALUE**



### NEW RANGE

42 metre 'Z' 5 Stage • 36 metre 'Z' 5 Stage 3 Axle • 38 'RZ' 5 Stage 3 Axle  
46 "RZ" 5 Stage and 50 metre "RZ" 5 Stage on 4 Axle

**TRAILER MOUNTED • TRACK MOUNTED • TRUCK MOUNTED • BOOM 25 TO 58 METRES • CUSTOM BUILT**

Head Office: 21 Sefton Road  
Thornleigh, NSW 2120  
Phone: (02) 9980 2277 (24 Hours / 7 Days)  
Email: [reception@transcrete.com](mailto:reception@transcrete.com)  
Transcrete Pty. Ltd.

DESIGNED & BUILT IN AUSTRALIA  
FOR AUSTRALIAN CONDITIONS



Vic Dealer: Mark 0407 669 600  
Qld Dealer: Gary 0418 711 290  
SA Dealer: Leroy 0417 789 515

[www.transcrete.com](http://www.transcrete.com)



# NSW GOVERNMENT SPENDING SPREE



The NSW Government is forecasting a \$3.7 billion surplus in 2016-17 with forecast surpluses over the next four years averaging an additional \$2 billion each year.

The budget surplus means a record of \$73.3 billion will be spent on infrastructure over the next four years. This ambitious infrastructure program sees \$41.5 billion in the transport cluster alone over the four-year budget cycle.

## Major projects include:

- \$2.9 billion for WestConnex, the largest transport project in Australia linking Sydney's west and south-west with the CBD, the Airport and Port Botany.
- \$2.7 billion in 2016-17 to deliver Sydney Metro, Australia's biggest public transport project. The allocation includes \$1.3 billion on Stage 1 of Sydney Metro (Sydney Metro North West), which opens in the first half of 2019. On Stage 2 of Sydney Metro, Sydney Metro City & Southwest, \$1.4 billion will be invested this year on the tender process and contract for tunnelling and early construction work in 2017.

- \$1.5 billion for the Pacific Highway to continue the duplication program, with construction underway on all remaining sections between Port Macquarie and Glenugie.
- \$1.4 billion for bus services throughout NSW including rural and regional bus services, school services in country areas and financing buses to replace older vehicles and provide capacity for growth services.
- More than \$1 billion over the next four years for growth trains on the existing suburban network.

Transport and road funding highlights in 2016-17 includes, \$2.9 billion allocated to WestConnex; \$2.1 billion on upgrades to key regional highways; and \$2.7 billion to deliver Sydney Metro (including \$1.3 billion for Sydney Metro Northwest and \$1.4 billion for Sydney Metro City and Southwest).

## NATIONAL HEAVY VEHICLE REGULATOR



All State Heavy Vehicle Laws are now under one roof thanks to The National Heavy Vehicle Regulator (NHVR). The NHVR looks after a single rule-book for heavy vehicles over 4.5 tonnes, gross vehicle mass, making it easier for concrete pumps and special-purpose vehicles to operate under a new National Class 1 Special Purpose Vehicle Notice.

As the NHVR has now joined peak industry associations and road authorities, productivity has boosted and red tape has been slashed for the construction industry.

The National Class 1 Special Purpose Vehicle Notice (the SPV Notice) was released on 6 May 2016. It was developed in collaboration with the Concrete Pumping Association of Australia, the Crane Industry Council of Australia, the Australian Local Government Association and State Road Authorities. The NHVR estimate the special purpose vehicle (SPV) notice will remove more than 4000 permits each year. HVR CEO, Sal Petrocchio said the SPV Notice ensured

that vehicles like mobile concrete pumps and mobile cranes will have access to a large network of state controlled roads across Australia. The NHVR will continue to work with road managers across the country to expand this network. The NHVR has drafted a certificate of conformance template to facilitate the use of mobile concrete pumps with larger rear overhangs under the SPV Notice. The notice and supporting documents can be found at: [www.nhvr.gov.au/national-notices](http://www.nhvr.gov.au/national-notices).

The CPAA has collaborated with the NHVR team, assisting them with regulations and decision-making over the last eighteen (18) months. The CPAA would like to thank the NHVR for their work, saving pumpers and other heavy vehicle operators approximately \$42 million AUD per year. We hope all pumpers find it easier to cross borders and configure their trucks in the future.

To view the information sheets for each state visit: <http://www.cpassoc.com.au/safety/nhvr>







[www.flowcrete.com.au](http://www.flowcrete.com.au)

**Flowcrete Line Pumps**

**Flowcrete Trailer Pumps**

**JunJin Stationary HP Pumps**

**JunJin Tower Booms**



**Line and Trailer Pumps from 30 to 100 cubes per hour, Australian Made, Tough, Reliable, and Easy to Operate and Maintain.**

**JunJin High Pressure Stationary Pumps... 284 bar Pressure at 70 cubes an hour ... That's alot of the grey stuff going a long way...**



**And to place the grey stuff exactly where it is needed, JunJin Tower Booms from 24 meter to 33 meter without counter weights, or 36 meters with counter weight.**

**Flowcrete Pty Ltd has it all, with the expertise, knowledge and history to back it all up...**

**HEAD OFFICE - NSW**

15 - 17 Beaumont Rd  
Mt Kuring-gai NSW, 2080  
P: 61 2 9457 8044  
F: 61 2 9457 9205

**QUEENSLAND**

Unit 1/35 Sodium St  
Narangba, QLD, 4504  
P: 61 7 3888 8988  
F: 61 7 3888 8999

**VICTORIA**

Unit 13/355 Sth Gippsland Hwy  
Dandenong, VIC, 3175  
P: 61 3 8787 5844  
F: 61 3 8787 5855

**WESTERN AUSTRALIA**

35A Boulder Rd  
Majaga, W.A, 6090  
P: 61 8 9248 4811  
F: 61 8 9248 3511

**NEW ZEALAND**

23A Rennie Dr  
Mangere, Auckland, 2033  
P: 64 9 257 0574  
F: 64 9 257 0135

Email: [sales@flowcrete.com.au](mailto:sales@flowcrete.com.au)

Email: [nzspares@flowcrete.com.au](mailto:nzspares@flowcrete.com.au)



# Mitchcon Taking Shotcrete to new heights - Andrew Mitchell

Mitchcon was approached by Hickory in early 2014 to discuss the possibilities of using shotcrete as an alternative to insitu concrete in the core and shear walls of their 43-level Latrobe Tower project.

Hickory not only required structural shotcrete sprayed up to 43-levels, but they required up to 70m<sup>3</sup> per day (volume in one level), of 50, 65 and 80mpa shotcrete for overhead spraying. This is because the shotcrete needed to reach a high early strength of 40mpa by day three.

Hickory Director, George Argyrou and Principal Engineer, Shan knew this was a challenging request, as this had not been done anywhere in the world. Managing Director of the family business, Mitchcon Pty Ltd, Andrew Mitchell, Manager of Operations Jake Mitchell, and Project Manager Lewis Mitchell saw this as an opportunity. They put to use the experience gained over almost 30 years of concrete pumping and spraying, and began workshopping with Hickory over the next 18 months to satisfy the project brief.

Mitchcon needed to be creative in meeting the challenge of the volumes of shotcrete required per floor per day to keep up to the demanding project timelines. Another challenge was to ensure that the concrete pump had the capacity to spray the shotcrete up to 43-levels, and still achieve the penetration required to ensure the walls were structurally sound. After seeking much advice from manufacturers all over the world, Mitchcon decided to purchase a high pressure Putzmeister concrete pump through David Bond from CPE Machinery.

Mitchcon and Hickory then looked to the shotcrete mix itself, and with a long relationship with Holcim, began to work with them to design and test the shotcrete so that it could firstly meet the high levels that Hickory demanded, and also withstand the pressure that would be applied to the mix when being sprayed up to the 43rd level of the tower. Timely deliveries to site, correct slumping of the mix, a careful eye on the pressures on the pump, certified and experienced nozzlemen, cutters and finishers were all required to maintain the quality of the end product of the structural walls.

Mitchcon would like to congratulate Hickory on the innovative project design, and can see this method of construction becoming a familiar seen not only over Melbourne, but many city skylines throughout the world. It has been a pleasure to be involved in such a challenging project, and Mitchcon thanks Hickory for the opportunity to be part it.

Today Mitchcon has grown to become one of the largest concrete pumping companies operating throughout Melbourne and regional Victoria and are well known within the industry for their high quality finishing and structural Shotcrete works. Mitchcon have the capability to service a vast range of commercial projects from factories, office developments to commercial and residential multi-level developments. Their current projects include Eastland Retail Destination, Chadstone Shopping Centre and Level Crossing removals at McKinnon and North Road.

For more information contact Mitchcon Pty Ltd  
23B Westside Drive, Laverton North VIC 3026 Phone 03 9316 5222  
Email [admin@mitchcon.com.au](mailto:admin@mitchcon.com.au), Website [www.mitchcon.com.au](http://www.mitchcon.com.au)





# CPE MACHINERY EDITORIAL

CPE Machinery, also known as Putzmeister Australia, supply and support a wide range of specialist machinery, parts and accessories used in construction, tunnelling and mining.

Their focus is on providing top quality products, at competitive prices, to ensure you get the job done right on site, in the quickest most cost effective way.

With over 40 years experience in the concrete pumping industry, and a reputation for providing the best solutions in the market, CPE Machinery is an Australian owned and run business, servicing the whole of Australia.

Best known as the experts in all things Putzmeister, they also supply a wide range of parts suitable for any brand of concrete pump, including World leading pipe and hose by Trelleborg, Esser Twin Pipes and Con Forms.

They proudly supply and support a wide range of market leading machinery, parts and accessories including:

- Truck mounted boom pumps
- Truck mounted line pumps
- Trailer pumps
- Placing booms
- Mortar, plaster & grout pumps (mixers, worm and piston pumps as well as pneumatic screed conveyors).
- Shotcrete, refractory and underground machines
- Putzmeister certified boom inspections
- Hose
- Pipeline
- Other concrete pumping accessories.

## BREAKING NEWS

Brand new state of the art service facility opening in 2017. Join our mailing list via the website to keep updated: [www.cpemachinery.com.au](http://www.cpemachinery.com.au)



# CONSTRUCTION MATERIALS INDUSTRY CONFERENCE - CMIC16

The Construction Materials Industry Conference (CMIC) will return to Melbourne in 2016. Celebrating CMIC's 10th anniversary, CMIC16 has a re-energised format that will attract more than 600 domestic and international delegates and guests from the heavy construction materials industry, suppliers and government.

In the week following the 2016 Concrete Pumper's Expo from 26th to 28th October 2016, the Melbourne Convention and Exhibition Centre will host a comprehensive program of speakers, exhibits and social events reinforcing CMIC's position as one of our industry's premier events. The Concrete Pumping Association of Australia will be participating at the event as an exhibitor and delegate.

The exhibit will include displays of safely manuals, stickers, logbooks, paraphernalia and the all-important chocolates and lollies to attract delegates.

## Conference highlights includes:

- 15 keynote speakers, including Barrie Cassidy, host of the Insiders
- 600+ registrants networking, including 140+ international delegates
- 35 exhibiting companies, 10 sponsors

The theme of the conference **"Capability and Innovation"**, covers materials, research, design, construction and innovation. The Conference provides a forum for the sharing of ideas and experience through the formal presentations, industry displays and contact between delegates. It is said to be the concrete industry's foremost technical and social event in the southern hemisphere for 2016.

The theme for CMIC16 of **"Capability and Innovation"** is core to business thinking today. Whether it is efficiencies in processes, improved offerings to customers, or support tools and business systems for frontline services, each aspect of your business will be challenged by this exciting conference.

Once again the Institute of Quarrying Australia (IQA) and Cement Concrete Aggregates Australia (CCAA) have joined forces to present the conference. CMIC16 will retain much of what delegates know and love while introducing new and exciting elements including;

## Exhibition

- A re-energised exhibition with a focus on maximum delegate flow and exposure for exhibitors.
- Dedicated Vendor Innovation Portal where exhibitors can feature their new products with a parallel series of technical industry presentations.

## Industry Innovation Day

- Dedicated exhibition visitor full day on Wednesday expanding on 2014 with technical industry presentations providing increased opportunity and value for local day visitors from across the industry at a very affordable price.

## Partnership

- An open and inclusive partnership offering encouraging more opportunities to show your support for the Conference to the delegates and industry at large.

## Program

- A two day compressed and punchy plenary program with high profile, dynamic thought leaders.
- A closing Business Leaders Lunch Forum on Friday will be the perfect opportunity to wrap up and say goodbye to contacts old and new.

## Social Program

- A networking focused Welcome Reception on Wednesday night to energise delegates for the official Conference opening on Thursday.
- Premier Gala Dinner to celebrate the industry on Thursday night at the National Gallery of Victoria under Leonard French's stunning stained glass ceiling featuring high-profile entertainment and open to additional ticket holders.

CMIC16 offers an unparalleled opportunity every two years for the construction materials industry to wrestle with these challenges. Can you afford to not have the most current contacts and thinking for you and your business?

The CPAA looks forward to welcoming you to CMIC16; Capability and Innovation.





# Multi media wet and dry blasting MACHINE SALES

- Stand alone units or full mobile systems available
- Wide range of blast media & consumables stocked right across Australia
- Concrete prep, Epoxy removal, line removal, graffiti removal, paint and coating removal from virtually any surface, fast and DUST FREE
- Removes dried concrete from your equipment fast, without the dust

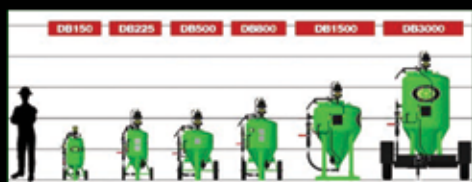
*We have everything you need to start your own business or improve the results in your existing business.*



## SPECIAL DISCOUNTS... on mention of this ad and CPA Magazine

- DB225 **\$1000 off** RRP
- DB500 **\$1250 off** RRP
- DB800 **\$1500 off** RRP
- DB500DAM Mobile Machine **\$4000 off** RRP

► **Plus 1 ONLY DB1500 Blast pot Price slashed by \$7500**



*There's a machine for every requirement*



For more information email:  
[sales@dustlessblasting.com.au](mailto:sales@dustlessblasting.com.au)

or call this number

**1300 304 415**

**[www.dustlessblasting.com.au](http://www.dustlessblasting.com.au)**

# 10 QUICK FACTS YOU NEED TO KNOW ABOUT EQUIPMENT FINANCE

*After 25 years of financing equipment for capital-intensive industries, I thought I would share a few facts which will assist business owners in getting this area right.*

## 1. Changes to stamp duty

Stamp Duty in NSW on Chattel Mortgage has finally been abolished putting savings back in your pocket from the 1st of July 2016.

## 2. Changes to STS pooling

The May Budget – Soon we should hear the ability for companies to elect to place their assets into the STS pool and claim depreciation rates of 30% DV (15% DV in year 1) has just been opened up to companies with a turnover up to \$10mil p/a. A massive saving.

## 3. Interest rates can vary by as much as 1%, so it pays to shop around

Unlike home loans, interest rates on equipment finance are very much open to the competition of a free market & as such can often be negotiated down by as much as 1% if sufficient competition is created between financiers so it pays to shop around.

## 4. The only hard security needed is the asset itself, so don't fall into the bank trap

The only hard security for equipment finance should be the equipment itself. Where a client uses their own bank for equipment finance, there is a very good chance that this loan will be secured (cross collateralised) against other assets including real estate, so stay away from borrowing for equipment where your mortgage is!

## 5. Spreading your equipment debt across several financiers provides many bonuses

Equipment finance allows a company to spread a greater portion of the overall debt to a broader base of financiers which means less exposure to their existing bank, greater competition between financiers to drive lower interest rates.

## 6. Thinking about equipment finance the same way as a credit card limit has its benefits

Just as in the same manner as you are approved for a "limit" on your credit card, Pre-approved bulk facilities for equipment finance can be set up in advance across several financiers & at no cost, making it easier for companies to acquire additional machinery at short notice without having to seek finance approvals in each instance.

## 7. Used Equipment is as easy to finance as New Equipment

Quality used equipment can have finance arranged just as easily as new equipment.

## 8. Private Sales can definitely be financed and a lot of money saved

Competitive equipment finance is easily available where the used equipment is being purchased from a Private Vendor. The lender however does require an inspection of the goods and a more rigorous PPSR regime to ensure clear title is passed onto the financier.

## 9. Financing GST is cheaper debt than an overdraft

GST can in most instances be financed as a part of the equipment finance facility if required by the client and in doing so provide what is in essence a very low cost working capital debt which is substantially cheaper than traditional overdraft rates. In the event that the customer does not want to finance the GST long term, however does not want to pay for it out of cash flow at the time of purchase, an extra payment can be made at month 4 of the transaction to coincide with the period where the client has the cash from their subsequent BAS refund.

## 10. All equipment finance is not the same when it comes to tax deductions

Although CHP & Chattel Mortgage structures limit a company's tax deductions to the interest & depreciation components of the asset (which is often far less than the physical annual payments of the debt), the prudent & appropriate use of an Equipment Finance Lease can often provide a tax deduction EQUAL to the monthly or annual payments being made under the Lease as the monthly payment itself is the deduction. This is often an underutilised product which is well worth investigating with your accountant and may save significant tax dollars.

Michael Ryan is a Senior Business & Equipment Finance Broker at Finlease  
M. 0417 279 891  
E. michael@finlease.com.au

**finlease**<sup>+</sup>  
your equipment finance partners







# In so many ways... Better than a bank

With the fire power that comes with annual funding of \$400M in equipment finance for clients just like you, try a team that does get it!

- + Specialists in equipment finance
- + Competitive rates
- + Offices Australia-wide
- + Easy 'end to end' process
- + 25 year track record
- + Pre approved funding limits arranged

& faster  
better than a bank  
^

Contact your local Finlease rep:  
Michael Ryan  
0417 279 891  
michael@finlease.com.au

1300 346 532  
finlease.com.au

**finlease** <sup>+</sup>  
your equipment finance partners





Introducing the revolutionary 31X-5RZ with a small footprint and long reaching capabilities.



QUALITY

AFFORDABLE

OPERATOR FRIENDLY

HIGH PERFORMANCE

Models

57S-6RZ

52X-5RZ

43X-5RZ

37X-4R

33X-5ZZ

31X-5RZ

25X-4Z

Designed for the operator. Engineered and built to last.

Contact Us

Anthony 0438 586 764

Joe 0402 369 380

[www.dyaustralia.com.au](http://www.dyaustralia.com.au)

[info@dyaustralia.com.au](mailto:info@dyaustralia.com.au)

1/2 Yellowbox Drive, Craigieburn VIC



DY Concrete Pumps Australia





®

**QUALITY SERVICE VALUE**

**W WIN Engineering Pty Ltd** has been established as the leader in concrete pumping accessories in Australia since 1991. Proudly serving the construction and mining industries throughout Australia and worldwide.

**W WIN Engineering**, offers the most diverse range of products for concrete pumping accessories and spare parts in the market. We supply high quality delivery hoses, reducers, pipeline, clamps and shotcrete accessories.

**W WIN Engineering** is proud to announce our new range of line and trailer pumps, assembled in our factory in Australia. The pumping capacity of our pumps range from 10-80 cubic metres per hour. For a full range of specifications and pricing please shoot us an email today.

Our products have been manufactured under the guideline establish by BVQI approved Quality Management System that conforms with ISO 9001. BVQI certificate number: **AUS13000286**.



**Add: 5 Blaxland Place, Milperra,  
NSW 2214, Australia**

**Ph: 02 9771 9525**

**Fax: 02 9771 9252**

**Web: [www.wwinengineering.com.au](http://www.wwinengineering.com.au)**

**Email: [wwineng@bigpond.com](mailto:wwineng@bigpond.com)**



ISO 9001  
BUREAU VERITAS  
Certification



# STANDARDS AUSTRALIA REVISION OF AS2550.15 (COMMITTEE ME191)

*AS 2550.15-1994 Cranes - Safe Use Part 15: Concrete Placing Equipment and referenced documents have been undergoing review since 2009 under the guidance of ME005-17 Sub-Committee.*

The Concrete Pumping Association of Australia nominated representative, Mr Anthony Mattar (Beloconnen Concrete) and Craig Heidrich, CEO of the Concrete Pumping Association of Australia in an Observer capacity have been attending meetings and providing feedback through the Association.

Following the Concrete Pumping Association of Australia appointment of Craig Heidrich, a review was conducted leading to the collapse of ME005-15 Sub-Committee due to lack of consensus and progress and the creation of a new Technical Committee ME191 in February 2016.

The Concrete Pumping Association of Australia has two nominated committee positions. Current nominated representatives are:

- Mr Anthony Mattar (Beloconnen Concrete) - Alternate Andrew Mitchell
- Mr David Bond (CPE Machinery) - Alternate Greg Torzillo
- Mr Craig Heidrich (CEO, CPAA)

## **The following summary keys events for the project timeline.**

- January 2013 - Initial Standards Committee draft circulated for public comment
- February 2013 - Craig Heidrich appointed CEO and undertakes review of ME005-15 Sub-Committee due to lack of consensus and progress
- March 2013 - Concrete Pumping Association of Australia makes significant submission to contemporise Standard
- December 2013 - Standards issues Draft Standard DR AS 2550.15 inviting public comment
- June 2014 - Standards Committee ME005-15 unable to resolve public comments -- ME005-15 collapsed by Standards Australia
- August 2014 - Standards Australia & Concrete Pumping Association of Australia jointly host Forum to resolve best way forward for AS 2550.15 review
- November 2014 - Concrete Pumping Association of Australia submit project proposal based on Forum outcomes
- March 2015 - Standards Australia invite support for project and nominating organisations
- October 2015 - Concrete Pumping Association of Australia submit revised project proposal with nominating organisational support
- March 2016 - Standards Australia approve project and call for nominations to newly formed committee ME091
- March 2016 - Concrete Pumping Association of Australia calls for 2 x member nominations (1 x Concrete Pump Operator 1 x Pump Manufacturer)
- April 2016 - Nominations filled. Anthony Matter and David Bond
- May 2016 - Reference Group meeting for nominated representatives to Standards Australia committee ME091
- May 2016 - ME191 Committee Kick off meeting conducted at Standards Australia.
- Confirmed project, scope of review to include line pumps, mobile and static boom pumps.
- Project to be completed within 18-24 months
- September 2016 - Next planned ME191 Committee meeting

The Concrete Pumping Association of Australia welcomes members enquires. We will endeavour to keep members abreast of developments through our regular e-blast.





# WELCOME TO THE CONCRETE PUMPER'S EXPO



TRAINING  
UPDATES

FOOD,  
DRINKS  
& BEER

PUMPING  
INDUSTRY  
UPDATES

VOC  
REQUIREMENTS

ANNUAL  
GENERAL  
MEETING

FROM  
10am  
- 4pm

## TOOLBOX TALKS WITH NEVILLE BARNES

At the Expo, Neville Barnes will be giving a 'Toolbox Talk.' Some of the topics Neville will be discussing are shown below.

Neville has been involved in the concrete pumping industry for over 40 years. Neville is a Truck Mounted Concrete Pump Placing Boom Trainer & Assessor at his company Kanefall.

### National PB High Risk Work Licence Information

- Registered Training Organizations
- State Accredited Assessors
- Licence Renewals
- What pumps can you operate with a National PB HRWL?
- Only the one they have been trained on
- Who can train operators for Machine Specific?
- Competent person with that Machine
- Manufacturer
- Concrete Pump Operators whom are competent on that machine.

### Duty of Care of Concrete Pump Owners

- Acts & Regulations for each state.
- What resources are required for a VOC training?
- Competent Person
- Plant Risk assessment
- Operators manual
- SWMS
- Daily Pre start
- Maintenance Records
- Log Books
- Training Register.

### Most common accidents with Concrete Pumps

- Ground compaction
- Working with Power wires
- Leg pad issues
- Air in the line
- Hose whip.

### Australian Standards updates

- Six year Inspections
- Who can do them?
- What sort of inspection required?
- Costs.



# 2016 CONCRETE PUMPER'S EXPO – RUN SHEET

10.00<sup>AM</sup>

## GATES OPEN

It's finally here, the 2016 Concrete Pumper's Expo! Upon entry and registration, all attendees go into the running to win the \$100 Bunnings Warehouse gift card lucky door prize. Attendees have time to walk around the Arena, talk to our sponsors, exhibitors and other attendees. Food and drinks will be available all day.

10.15<sup>AM</sup>

## WELCOME ADDRESS

At 11:00am CPAA President Andrew Mitchell (Mitchcon) will open the day with a welcome address, discussing the events and proceedings of the day.

10.30<sup>AM</sup>  
-1.00<sup>PM</sup>

## CONCRETE PUMP OPERATOR OF THE YEAR

The moment everyone's been waiting for. Who will be crowned the Concrete Pump Operator of the Year? Challengers will take turns in moving a pump arm through an obstacle course, in the fastest time with the most skill. The winner will receive the trophy, free CPAA shirt and hold bragging rights as Australia's best boom pumper!

10.30<sup>AM</sup>  
-1.00<sup>PM</sup>

## CONCRETE LINE OPERATOR OF THE YEAR

To win, pumpers must assemble and disassemble a 15m length line hose in the fastest possible time in teams of two. Pumper's will either compete against their colleagues or compete against other companies. The winners will receive trophies, free CPAA shirts and hold bragging rights as Australia's best line pumper!

11.00<sup>AM</sup>  
-11.30<sup>AM</sup>

## TOOLBOX TALKS WITH NEVILLE BARNES

Neville has been involved in the concrete pumping industry for over 40 years. Neville is a Truck Mounted Concrete Pump Placing Boom Trainer & Assessor at his company Kanefall. At 11:00am and 1:45pm Neville will talk about VOC's, tips and tricks and answer as many of your questions as he can.

12.00<sup>PM</sup>  
-4.00<sup>PM</sup>

## BEER GARDEN

The beer garden will open from midday, so why not grab a drink and some food and watch the finals of the Concrete Pump and Line Operator of the Year Competitions.

1.10<sup>PM</sup>

## CPAA AWARDS

Once the Pump and Line Operator of the Year competitions have finished, awards and CPAA merchandise will be handed out to the winners, as well as the \$100 Bunnings Warehouse gift card for the lucky door prize winner and the trophy for the best looking exhibitor stall on the day.

1.15<sup>PM</sup>  
-1.45<sup>PM</sup>

## AGM AND MANAGEMENT MEETING

The AGM will review the last 12 months of achievements, projects and financial challenges undertaken by the CPAA. Everyone is welcome to attend the meeting, with time provided for questions after each major topic.

1.45<sup>PM</sup>  
-2.15<sup>PM</sup>

## TOOLBOX TALKS WITH NEVILLE BARNES

Incase you missed the morning session Neville will give a similar talk as in the morning. Neville will discuss VOC's, tips and tricks and answer as many of your questions as he can.

2.15<sup>PM</sup>  
-4.00<sup>PM</sup>

## SOCIALISE AND CLOSE

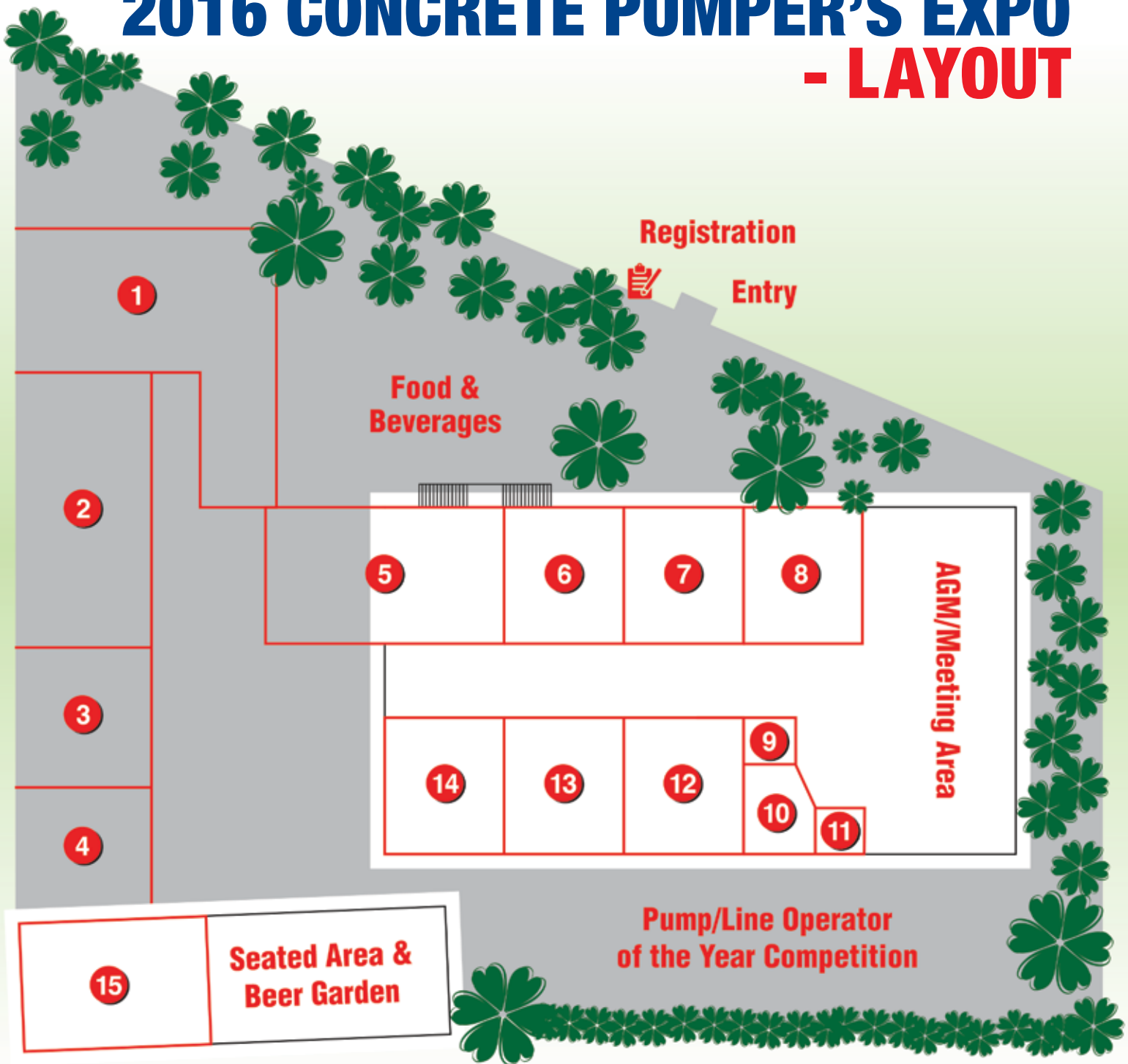
Say goodbye to old friends and new, and perhaps make your way into the city of Melbourne for dinner or head back to one of multiple hotels organised for attendees of the Expo. Check the Expo webpage for more information.





# 2016 CONCRETE PUMPER'S EXPO

## - LAYOUT



### KEY:

- |                     |                              |                             |
|---------------------|------------------------------|-----------------------------|
| 1 Equipcon          | 6 Flowcrete                  | 11 JLT Insurance            |
| 2 Schwing           | 7 Pump Connect               | 12 Equipcon                 |
| 3 CPE Machinery     | 8 W Win Engineering          | 13 Flowcrete                |
| 4 W Win Engineering | 9 N.L Tucker & Associates    | 14 Equipcon                 |
| 5 CPE Machinery     | 10 CPAA & Concrete Institute | 15 Callaghan Concrete Pumps |

# MEET THE EXHIBITORS



You've been thinking about buying a new concrete pump for a while now. You've done the research, but just haven't decided where to go for the best quality, best service, and best price in the country. Wait no longer! Equipcon has the trifecta for you! Equipcon is ISO certified and implements an integrated quality management system, which ensures that its customers receive the best quality service and equipment. Equipcon is your 2016 Pumper's Expo Gold Sponsor. Come over and say hello to Carlo and the team; you'll find us both indoors and outdoors!



CPE Machinery is proud to be Gold Sponsors of the 2016 Concrete Pumper's Expo. Visit our stand and check out a couple of our world leading Putzmeister truck mounted concrete pumps. Find out how you can save time and money with Trelleborg hose and Esser & ConForms pipeline, or just have a chat with David, Peter, Justin, Tim and the rest of the team! We'll also have a select number of Putzmeister models available to purchase – get in quick while stocks last!



The team from SCHWING AUSTRALIA look forward to welcoming you to our exhibit at the 2016 CPAA Expo. Catch up with Phil O'Rourke, Michael Walker and John Muldoon from our Technical Services team to discuss any of your Engineering and Service queries. Meet Rich Connell, who'll be presenting our range of Genuine SCHWING Spare Parts and Accessories. Kick the tyres of the New SCHWING Truck Mounted Concrete Pumps on show and chat with Damien McTernan and our colleagues from SCHWING Germany about stepping up into the ROCK SOLID SCHWING machine you've always wanted!



W Win Engineering Pty Ltd of Milperra NSW offer a big welcome to all of the participants at the 2016 Concrete Pumper's Expo. Feel free to ask any of our engineers and technicians about our range of products. Meet John Zhuang, who will be presenting the technical advantages, cost effectiveness and reliability of our concrete pumps. Moreover, Win Engineering carries the largest range of genuine and aftermarket spare parts and accessories for any popular brand of concrete pump in the market. Come and meet Manu Sun and the team to find out more about us!



Flowcrete Pty Ltd welcomes you to the 2016 Concrete Pumper's Expo and looks forward to seeing you at our stand. We will have our representatives from across Australia and New Zealand at the Expo to answer all your questions about the latest in JunJin and Flowcrete Concrete Pumps, Spare Parts, Service and Re-Certification work. Special Deals and Promotions will be available on the day so come and see the team that works with you to find solutions to meet your needs!





**PUMPCONNECT**

Pump Connect is a new App that connects concrete pumpers. Developed to make your workday easier. Find a Pump - Find a Job - List your Pump. Come along and have a chat to us about our App or let us know how you've been going using it. We'll also have an interactive display so if you haven't given it a go yet, you can try it out and see how it works! There will also be FREE giveaways and if you sign up on the day you'll go into the draw to win a new Samsung Tablet. So come down and say hello!



**Callaghan**  
CONCRETE PUMPS

Callaghan Concrete Pumps looks forward to seeing you at the 2016 CPAA Expo. We have rebranded! So come check out our fresh, new look at our stand and have a chat with Brian – your go-to for all local industry questions. Ron and Phil will also be onsite for all your concrete pump and product enquiries. Specials and promotions will be on offer throughout the day alongside our display of the latest pumps and parts. You have the questions; we have the answers!

CONCRETE INSTITUTE  
of AUSTRALIA

The Concrete Institute of Australia is pleased to be exhibiting at the 2016 Concrete Pumper's Expo and look forward to seeing you at our stand. The Institute has a vision for *excellence in concrete* and the Expo is a great opportunity to see how this is being achieved in the concrete pumping and spraying industry in Australia, and through the Concrete Pumping Association of Australia.



Jardine Lloyd Thompson has been serving the needs of concrete pump owners and operators in the Australian concrete industry for a period spanning two decades. Our team of specialists has the knowledge and expertise to recognise your specific needs and deliver innovative, flexible solutions to minimise your exposure and match your budget. Our aim is simple: To consistently deliver products that offer you the widest possible protection backed by exceptional customer service, allowing you to focus solely on your business. Andrew Thornton and Terry Connor look forward to meeting you at the 2016 Expo to discuss your concrete pump insurance needs.



With over 30 years experience in radio remote control systems, N.L. Tucker + Nbb Radio Controls Pty Ltd are looking forward to showcasing our customised remote control systems at the 2016 Concrete Pumper's Expo.

Come and see the latest in German engineered remote controls for all your line pumps, boom pumps and concrete agitators. Try out the very popular Planar V8 remote for line pumps and see the joystick technology for the boom pumps. Get the latest in technology and reliability on your machine.

# Call 1300 CARBOTECH for a free quote today!



Equipcon holds the market share in Victoria for concrete placing booms! So, choose Equipcon for your next boom!

Equipcon specialises in:

- Truck-mounted concrete pumps
- Trailer concrete pumps
- Concrete placing booms

Equipcon offer the following services and repairs on all concrete pump brands:

- Boom section repairs
- Electrical and hydraulic diagnostics
- Annual inspections and safety checks
- Boom strip down and certification

So, whether you have tunnels, factories or highrises to contend with, Equipcon offers the right service and equipment for your job.

## We Are Expanding In 2017

The new 1500 square metre Equipcon factory will be completed by September 2017 and will provide the company with a larger, better-equipped working area.



Scan The  
QR Code  
To Join Our  
Mailing List

Find Us On



Visit [www.equipcon.com.au](http://www.equipcon.com.au)

A Quality Assured Company



Authorised dealer – Australia-wide

[sales@equipcon.com.au](mailto:sales@equipcon.com.au) | [www.equipcon.com.au](http://www.equipcon.com.au) | 14 Ainslie Road, Campbellfield, Victoria  
Interstate Sales: Paul 0419 730 603 | VIC Sales: Carlo 0417 337 746 | WA Sales: Jason 0438 028 095



# equipcon

construction equipment

## Make Your Next Pump Count



With more than 30 years' experience in the field, Equipcon can provide the right pump for your job, every time!

Zoomlion Finance Available | Terms and Conditions Apply



# EDUCATION • SAFETY • CERTIFICATION



**www.cpassoc.com.au**

