

2015 CONCRETE PUMPER'S

ISSUE NUMBER 12 ANNUAL MAGAZINE

**AN ISSUE WITH NO CONCRETE
SOLUTION - KINGDOM TOWER**

**NEW PRODUCTS TO THE
CONCRETE PUMPING MARKET**

**CPAA IN MELBOURNE
FOR CONCRETE 2015**

**THE FUTURE OF
CONCRETE PUMPING**

**SHOTCRETE TRAINING
AND CERTIFICATION**

INDUSTRY STRATEGIC PLAN



LOWER RUNNING COSTS + HIGHER RESALE RETURN = BETTER VALUE



SCHWING has been manufacturing the world's most reliable, efficient and economical concrete pumps for three generations.

Competitive pricing up front, underpinned by lower running costs and higher resale values combine to create unbeatable value. You can afford the **SCHWING** machine you've always wanted, contact us today and show everyone you mean business.

Call us for Better Value
02 4369 6884



SCHWING
AUSTRALIA

CONCRETE • MIXING • TRANSPORT • PUMPING • RECYCLING • SOLUTIONS



Concrete Batching Plants



Truck Mixers



Truck Mixer Concrete Pumps



Truck Mounted Concrete Pumps



Stationary Concrete Pumps



Separate Placing Booms



Concrete Recyclers



Sludge pumps

New & Used SCHWING Equipment // Genuine Spare Parts // Certified Training Programs // Technical Trouble Shooting // Rebuilds

// Engineering Consultation // Annual Inspections & Recertifications

P 02 4369 6884 E contact@schwing.com.au W schwing.com.au

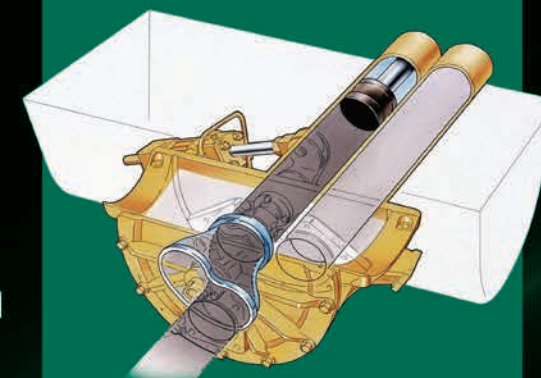
TABLE OF CONTENTS

2015-2016 Management Committee	6
New Members in 2015	6
Message From the President	7
Message from the CEO	9
Shotcrete Training and Certification	13
CPAA Products	15
News Blog	15
CPAA Membership Information	17
New Products to the Concrete Pumping Market	19
CPAA in Melbourne for Concrete 2015	20
Industry Strategic Plan	25
Do you or a colleague have the skills, interest and time to be a Nominated Representative or Reference Group Member?	26
Calling On Members to Help Shape the Future of AS2550.15	27
Industry News - Berry Bypass	28
Lauren Hatton - New Employee	28
Concrete Pumping in the 70's - Ian Hay	30
The Future of Concrete Pumping	31
Concrete Pump Supplies	32
An Issue with no Concrete Solution - Kingdom Tower	33
International Member - Haginia Hire	35
Advantage Concrete Pumping - A Five Year Journey by Nathan Tolhurst	36
Guardian Constructions - "Honesty, Integrity, Reliability & Care"	37
CPE Machinery - Putzmeister	38
equipcon - A Family Owned Company	38
Stay Connected: Facebook and Twitter	40
2016 Concrete Pumper's Annual Magazine Advertising	40

Better Value is within reach.

You get what you pay for with SCHWING machines – rock solid performance that's built to last.

Engineered to deliver superior reliability, lower running costs and higher resale values, making SCHWING more profitable to own. You can afford the SCHWING machine you've always wanted.



Rock Concrete Valve

- SCHWING's patented ROCK valve outperforms all others across a wider range of mixes, delivering you outstanding fuel economy.
- The ROCK valve's superior flow path maximises wear life and minimises pressure losses, demanding less power to pump concrete, resulting in lower running costs.



Open Hydraulic System

- In open circuit, oil returns to tank after each cycle, permitting cooling and settling of contaminants to reduce wear and extend service life.
- SCHWING's generously dimensioned hydraulic components optimise service life and ensure minimal pressure losses for more efficient operation.
- High pumping capacities even at low engine speeds further reduce fuel consumption.



Booms

- Industry leading slewing ranges up to 740° and low unfolding heights optimise flexibility on the job.
- Big slew rings, external levers and longer hollow pins guide the boom. Pipeline routed along the neutral axis of each boom stage maximises boom service life and reduces R&M costs.
- Practical boom configurations including 4 and 5 stage boom packages combine with reliable Roll Fold, Roll Z and Telescopic boom geometries to reach your job efficiently, inside and out.



Main Frames & Outriggers

- In operation, boom reaction forces move into the main frame and then out to the ground via the outriggers. SCHWING's large slew ring gear, anti-torsion frames and outriggers spread forces over a larger area thereby minimising stresses on steel and ensuring steady, smooth operation.
- Single box section outriggers enhance stability and compact footprints get you closer to the pour on tight sites. "Swing Out" rear outriggers are not necessary <40m SCHWING machines.



Layout

- Typical SCHWING – everything in its right place for efficient operation and maintenance.
- Ample storage for tools, timbers, pipes, hoses and accessories with fold down sideboards.
- Easily accessible air, water, grease points and control systems are all within safe reach from ground level.



Options

- SCHWING offers a wide range of value adding options to optimise the safety, efficiency and economy of your operation.
- Choose from our EASy Stabilisation System, Safety and Working Lights, Air Compressor, HP Cleaner, Chamber Valve, 360° Rotating Outlet, End Hose Squeezer and more.

Choose New SCHWING Equipment & Genuine Spare Parts

Certified Training Programs ■ Technical Trouble Shooting
Rebuilds ■ Engineering Consultation ■ Annual Inspections & Recertifications

Phone 02 4369 6884

Email contact@schwing.com.au www.schwing.com.au



SCHWING
AUSTRALIA

CONCRETE • MIXING • TRANSPORT • PUMPING • RECYCLING • SOLUTIONS

President
Andrew Mitchell

Chief Executive Officer
Craig Heidrich

Concrete Pumping
Association of Australia Inc.
PO Box 1194, Wollongong, 2500.
Phone: 1300 136 636
Fax: 02 4258 0169
Email: info@cpassoc.com.au
Website: <http://www.cpassoc.com.au>

Editor
Aiden Chilcott

Editorial Coordinator
Jake Latham

Contributors
Andrew Mitchell
Craig Heidrich
Lauren Hatton
Carol Wilson
Jake Latham
Aiden Chilcott
Caroline Mezzavia
Connie Tolhurst
Damien McTernan
Ian Hay

Design
Troy Hawkins - 101 Design

Print
Hatem Ekiabi - Snap Printing

The Concrete Pumper's Annual Magazine is produced for Members of the Concrete Pumping Association of Australia and other interested readers.

The statements made or opinions expressed in this magazine do not necessarily reflect the views of the Concrete Pumping Association of Australia.

2015 Management Committee

President
Andrew Mitchell Mitchcon Pty Ltd

Vice President
Matt Boyer Rapidcrete Pty Ltd

Treasurer
Anthony Mattar Belconnen Concrete Pty Ltd

Secretary
Peter Loveday Coastwide Pumping Pty Ltd

Committee Member
David Bond CPE Machinery Aust Pty Ltd
Michael Keenan Meales Concrete Pumping Pty Ltd
Mick Wherritt Michael J Wherritt Pty Ltd

New Members in 2015

- Advantage Concrete Pumping Pty Ltd
- Andalusia Construction Group Pty Ltd
- Aus Pump Pty Ltd
- Belcon Pumping
- Bowen Concrete Pumping
- Brad Shield Concrete Pumping
- Breeny's Pumping
- Canada Bay Concrete Pumping
- Class CC Pty Ltd
- Direct Concrete Pumping
- Diverse Concreting
- Engineering Services & Non Destructive Testing
- Finlease (Aust) Pty Ltd
- Foden Concrete Pumping
- GBJ Sabbouh Concrete Pumping
- Get Pumped Concrete Pumping (A&A Seremetis)
- Guardian Constructions Pty Ltd
- Haginia Hire Ltd
- Hart Concrete Pumping Pty Ltd
- Highpeak Concrete Pumping
- Hy Spec Shotcreting
- Jag Concrete Pumping
- Large Concrete Pumping Pty Ltd
- Lipari Concrete Pumping Pty Ltd
- Metro Masonry Contractors
- Poolcrete Pty Ltd
- Rock Control
- Spurzing Pty Ltd (Orange Concrete Pumps)
- Stratacrete Pty Ltd
- Super Rain Pty Ltd
- The Italian Master Concreting
- Toll Mining Services
- Topline Concrete Pumping
- V & G Plant & Equipment

MESSAGE FROM THE PRESIDENT



If there were a few words that could be used to define the last 12 months since the 2014 Concrete Pumper's Annual Magazine it would be 'Growth, Recognition and Leadership!'

In the last 12 months, membership has almost doubled, with sales of the Association products and services significantly increasing. The Association has delivered on it's first ever series of training and certification programs, launched some new products, made key legislation changes impacting on members, and launched a new look Association across Australia.

It's been a busy year and I'd like to thank all those involved in increasing the profile, professionalism, safety and standing of the Concrete Pumping industry throughout Australia, in particular, my fellow Management Committee, Members, Advertisers and Sponsors and many more.

I'd like to summarise some key achievements of the Association. Through the appointment of the professional contract secretariat company (HBM Group) to manage the day-to-day affairs of the Association, this year has seen the Association continue to pursue its objectives, moreover implement its adopted 3 year strategic plan.

The National Management Committee Strategic Plan maps out the next three (3) years and required actions to manage membership development, education, information dissemination and engagement with industry stakeholders.

The Strategic Plan identifies the following overarching organisational objectives over the next three (3) years.

- Financial and Organisation Sustainability
- Building our Profile and Positioning
- Membership Growth and Benefits

The last twelve months have resulted in dramatic changes, not only in the way the Association is managed, but with increasing views and engagement by the wider industry. We continue to focus on the development and promotion of the professionalism and profile of the concrete pumping industry as a valued, important and integral part of the construction industry, providing time critical and dependable concrete placing ability.

The following is a summary of activities of the Concrete Pumping Association of Australia over the period.

Industry & Government Engagement

1. Established working relationships with like-minded and shared interest bodies to harmonise the many varied regulations across Australia into one set of national guidelines.

- Federal and State Safe Work Authorities
- Standards Australia
- National Heavy Vehicle Regulator
- Cement Concrete Aggregates Australia
- Crane Industry Council of Australia
- CPSISC and review of HRWL for concrete placing boom.

2. Established working involvement with Standards Australia (AS 2550.15) and related codes impacting on members.

- Undertook review and wider consultation on proposed draft by ME005-15
- Made submission to ME005-15

Membership Engagement

3. Published six (6) e-blast editions to provide regular methods of communicating with members through our website (<http://www.cpassoc.com.au>) and general publications of the Association.
4. Published Concrete Pumper's Annual Magazine in November 2014, post the National Expo and Picnic. Distributed 1,250 copies.
5. Published two (2) safety bulletins (Completed).
6. Launched major website updates and e-commerce methods for ordering, payment and delivery of log books, safety manuals and stickers sold by the Association.
7. Updating of CRMS (Customer Relationship Management System) database. 1,300+ concrete pumping related businesses identified, captured and imported into our CRMS for membership marketing campaign.
8. Planned, coordinated and delivered the National Expo and Picnic for 2014. Details found at <http://www.cpassoc.com.au/programsevents/expo/expo-2014>. The event offered valuable networking opportunities with members, manufacturers, distributors, service providers and other key industry stakeholders.

Projects & Industry Development

9. Engaged with Construction and Property Services Industry Skills Council working group on review of 'Licence to operate a concrete placing boom' HRWL tasked by SafeWork Australia. Made submission(s) for amendments which provided a solutions based approach. (Ongoing)

10. Commenced the development of National Concrete Pumping Industry Guidelines and required actions to better manage education, information dissemination and engagement of industry stakeholders.
11. Completed a major review of Association website to incorporate new e-commerce features for online order and transactions.
12. Completed a review and made industry submission to City of Sydney on Hoardings and Scaffoldings.
13. Commenced a review of suitable national plant certifications schemes. (Ongoing)
14. Engaged with the National Heavy Vehicle Regulator and participated in a national workshop for SPV1. (Ongoing)
15. Undertook a review of products of the Association. Published updated 'LOGBOOK'. Printed new safety sticker kits using premium vinyl materials. (Completed)

In closing, to maintain this momentum, I urge all members and non-members to speak with others involved in our industry and consider becoming active members in the Concrete Pumping Association of Australia. Through your participation we can work together, improving our skills and safety performance, translating into better business performance and value to the industry members.

Andrew Mitchell

President
Concrete Pumping Association of Australia

Stay safe, and keep pumping.

MESSAGE FROM THE CEO



With attendance numbers being lower than expected at the 2014 Expo and Picnic Weekend, the Association conducted a post event survey to obtain feedback from sponsors, advertisers and participants about what changes needed to be implemented.

The results of the survey highlighted overwhelming support for the undertaking of a biennial event. So, as we inch closer to 2016 we can begin to look forward to our next Expo! We have also discovered the need to share the fun between the States and we expect that our members will follow the excitement to our next Expo!

The Association Management Committee has listened to the survey results and the next Concrete Pumping Expo event is planned to be in Melbourne in late 2016. The Association is currently investigating partnership opportunities and hopes to make a major announcement soon.

Industry Snapshot

The Concrete Pumping Association of Australia is the national body representing the interests of the concrete pumping industry within Australia.

- Provide a strong, unified and respected voice for the concrete pumping industry across Australia, working to improve the professionalism, safety, standards and performance of the industry;
- Improve the standing of the industry by informing and educating our members through the provision of valuable advice, safety products and services;
- Represent the concrete pumping industry to Australian governments and other stakeholders to ensure the best outcomes for members in terms of the sustainability of the industry and the safety of employees.

The Concrete Pumping Industry

- Has over 1,300 concrete pumping related businesses operating approximately 9,000 pieces of plant around Australia responsible for providing time critical, dependable and safe concrete placing ability to both major and minor infrastructure;
- Employs approximately 12,000 people;
- Operates invested capital of \$3.5 billion to pump materials (e.g. concrete) each year;
- Contributes \$1.5 billion of revenues into the economy and;
- Integral part of the construction industry contribution of \$11.7 billion to GDP.

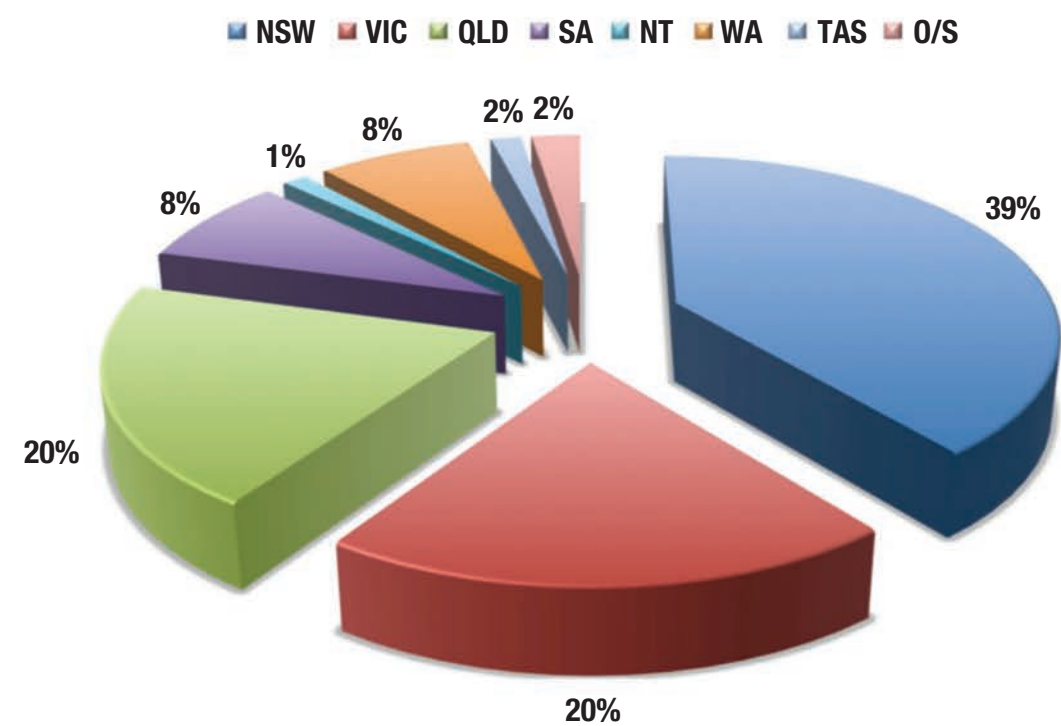
Membership profile by state and classification

As shown in these charts, membership is widely distributed across Australia, with no particular State having any dominant over-representation. Because of this, the Association can claim to be a national body representing the interests of the industry.

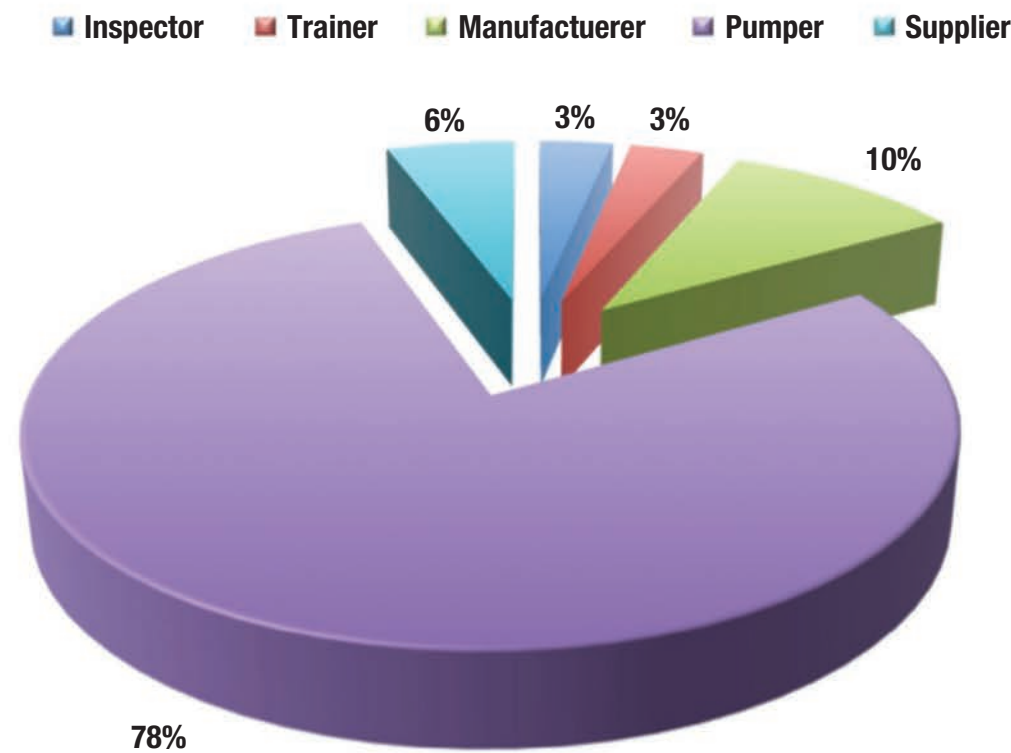
Secondly, the Association was founded to represent the interest of pumping contractors. More than 78 percent of members are pumping contractors today.



Membership Sector by State



Membership Sector by Classification



Concrete Pumping Association of Australia - National Concrete Pumping Industry Guidelines (PumpSafe)

With the Association now leading the charge to review the Australian Standard 2550.15 it is opportune for the Association to revisit the current Association 'Pump Safe Australia - Safety Manual'. The aim is to consider the appropriateness of the current focus and scope of the safety manual including the expansion of the current document into a nationally consistent guideline on the safe operation, cleaning and maintenance of concrete pumping booms.

Over the past several years a number of State Work Safe Authorities (SWS) and Non-Government Organisations (NGO's) such as Cement Concrete Aggregates Australia (CCAA) have developed and published specific guidelines for the safe operation, cleaning and maintenance of concrete pumping booms. In the case of SWS requirements, these actions were driven primarily by fatalities and incidents within their respective states.

A particular focus within each of the guidelines is to articulate 'who should' and 'how to' carry out major inspections, which is not an area the Association has addressed in any of its publications. Understandably this information void has been filled by SWS and NGO publishing various uncoordinated guidelines that has led to some dislocation and confusion between States. The implication to the Concrete Pumping Industry is the inconsistent requirements across the States, which presents barriers to inter state business activity.

Through the development and publication of a *National Concrete Pumping Industry Guidelines (PumpSafe)*, the Concrete Pumping Association of Australia will provide simple, clear and nationally consistent guidance for the safe operation, cleaning and maintenance of concrete pumping booms, in particular requirements for how to carry out major inspections.

Focusing on maintenance requirements under AS2550.15 within Section 8, there is considerable confusion between what is determined to be required versus what some operators, assessors, equipment distributors and sellers of concrete pumping booms are actually doing to ensure equipment is correctly maintained and certified so as to be safe for use.

Allegations abound of major inspections being conducted fraudulently, with various industry participants suggesting inspections simply do not measure up to what is required for a safe and reliable concrete pumping industry.

There are considerable parallels within the Crane Industry. Ultimately the whole industry suffers due to a perception of 'least cost' industry attitude and worthless inspection certification. This may result in tragically unsafe plants leading to injuries in the workplace.

The Concrete Pumping Association of Australia is taking responsibility for the industry and showing real leadership where none currently exists. Through the cooperative development of these guidelines we can provide clear and unambiguous guidance on industry expectations and clean out the blockages in the pipeline!

Craig Heidrich
CEO
Concrete Pumping Association of Australia

Getting finance through your bank as hard as concrete?

FAST TRACK APPROVAL

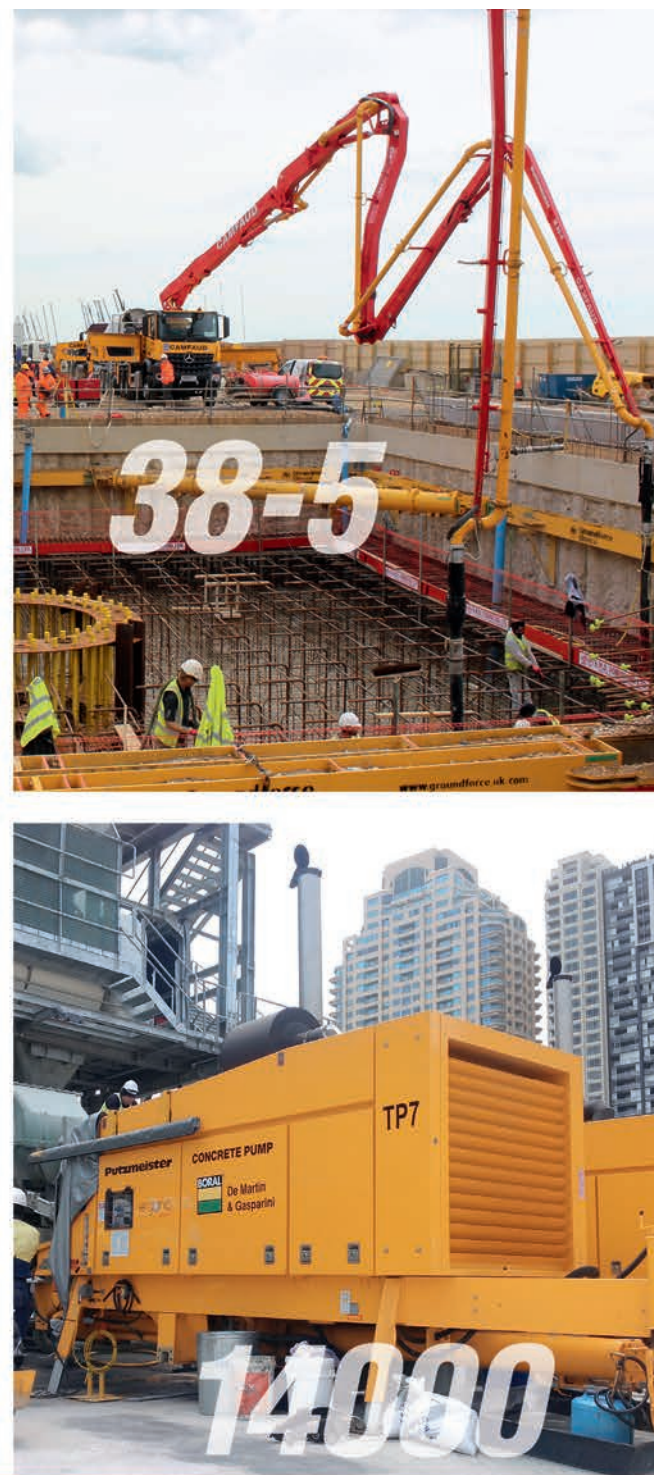
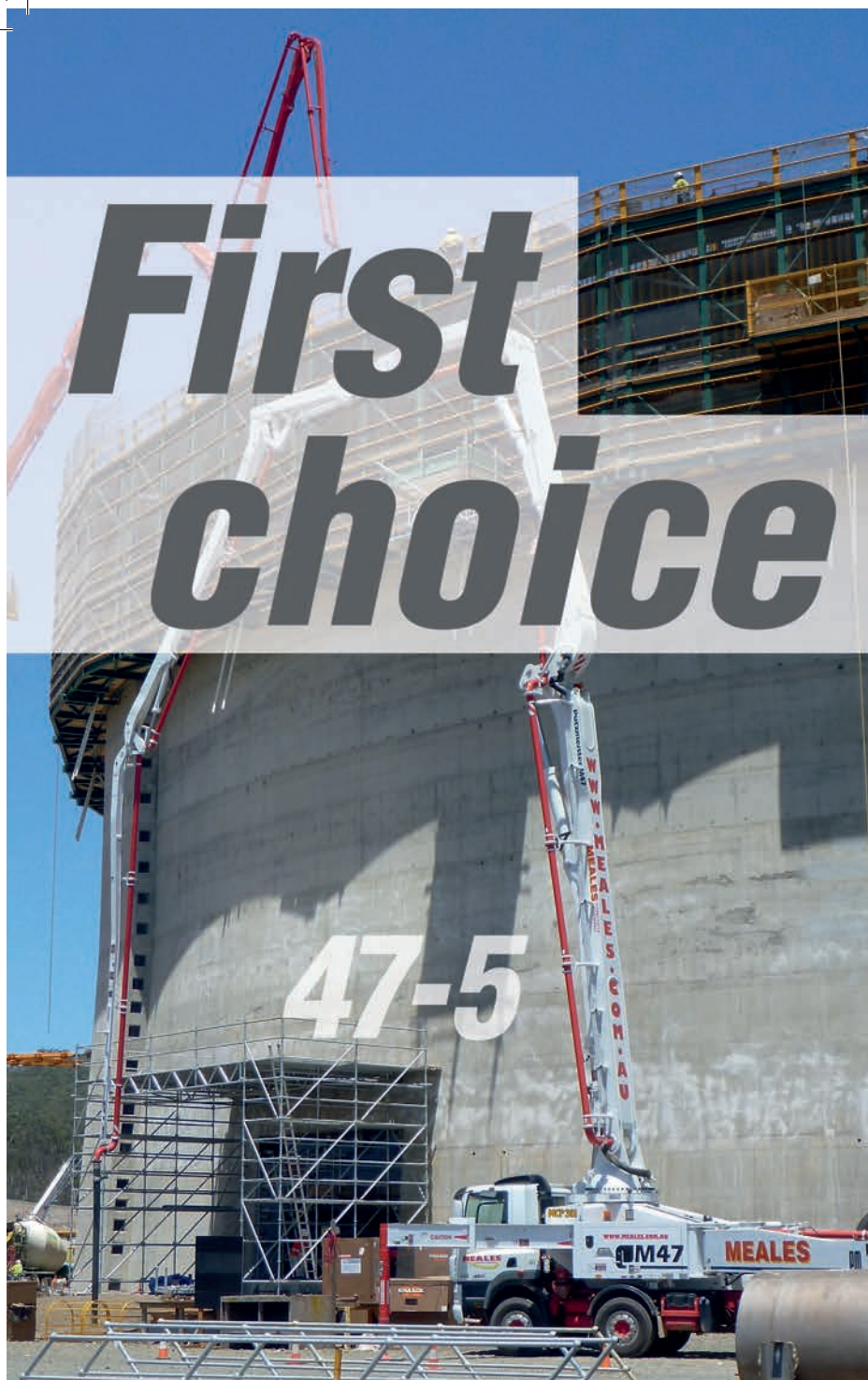
- * Specialists in equipment finance
- * Competitive rates
- * Offices Australia-wide
- * Easy 'end to end' process
- * Pre approved funding limits arranged
- * 25 year track record

TALK TO MICHAEL RYAN
0417 279 891
michael@finlease.com.au
www.finlease.com.au

finlease
your equipment finance partners

& faster
better than a bank





First choice for concrete pumping: Putzmeister concrete pumps

Putzmeister Concrete Pumps GmbH · 72631 Aichtal · Germany · www.putzmeister.com



CPE Machinery Pty Ltd
10-12 Kimpton Way (PO Box 442) · Altona VIC 3018 · Australia
Tel: +61 (0) 3 9931 4200 · Fax: +61 (0) 3 9931 4211
www.cpe-machinery.com.au



Putzmeister

SHOTCRETE TRAINING AND CERTIFICATION

The Concrete Pumping Association of Australia (CPAA) hosted the first Australian based Shotcrete Certification event, on the 3-5 September, 2015. The first day of the event was held at Lord Somers Camp and Power House, Albert Park, Melbourne. Followed by the Shotcrete testing at Mitchcon's worksite in Brooklyn on the second day.

The CPAA hosted this event in partnership with the American Concrete Institute (ACI), The Australian Shotcrete Society (AuSS), the American Shotcrete Association (ASA), the Concrete Institute of Australia (CIA) and Mitchcon.

Staff from HBM Group (Craig Heidrich, Aiden Chilcott and Lauren Hatton) set up the room early on Thursday morning. The first day included educational training and written examinations. Charles Hanskat, the ACI examiner who provided the content for the education sessions, employed interactive lecture style teaching methods to ensure that all participants received the highest benefit from the information that was disseminated. A projector was used to feature the educational content and proved to be a useful tool in teaching the delegates about all things shotcrete, ensuring a collaborative learning environment.

"Very informative and well worth the time away from work."

Tony Di Cara, Andalucia Construction Group

Doors opened at 7:30am with a meet and greet, and the presentation was underway by 8.00.am. The Concrete Pumping Association of Australia provided lunch to all participants, many of whom had travelled interstate, or from New Zealand to participate in the event.

The second day of the event was overseen by Jake Mitchell (Mitchcon). Jake assisted the CPAA throughout the entire project, including the time-consuming and labour intensive construction of the test panels. The noteworthy assistance provided by Jake and his team was highly valuable and greatly appreciated. Each participant was offered the opportunity to become certified in Wet-Mix Shotcrete, in Vertical and/or Overhead Spraying. A separate, specifically designed test panel was constructed on site for each participant, for both the vertical, and the overhead depending on their preference.

In order to receive the ACI certification, the participants had to successfully shoot test panels (determined by the ACI examiner) and complete and pass the written examination. On the Saturday following the shooting, the examiner cored the test panels at various locations in order to determine the quality of workmanship and the skills of the participant.

The event provided a great platform for the sharing of knowledge and experience through formal presentations and informal contact between delegates. It was the Association's first technical education event, and was regarded as a great success by the ACI examiner, Charles Hanskat, from the American Shotcrete Association. The Shotcrete Certification event proved to be a great opportunity to promote the Association; further educate industry personnel and increase our current position in the Concrete Pumping Industry.

The Association would like to welcome any feedback about the event. Research is currently underway to determine whether the event will be organised again next year. To express your interest, visit the CPAA website. Keep an eye out for updates.





**QUALITY
SERVICE
VALUE**

W WIN Engineering Pty Ltd has been established as the leader in concrete pumping accessories in Australia since 1991, proudly servicing the construction and mining industries throughout Australia and worldwide.

W WIN Engineering, offers the most diverse range of products for concrete pumping accessories and spare parts in the market. We supply high quality delivery hoses, reducers, pipeline, clamps and shot-crete accessories.

W.WIN Engineering is proud to announce our new range of line and trailer pumps, assembled in our warehouse in Australia. The pumping capacity of our pumps range from 10 - 80 cubic metres per hour. For a full range of specifications and pricing please shoot us an email today.

Our products have been manufactured under the guidelines established by BVQI approved Quality Management System that conforms with ISO 9001. BVQI certificate number: 13000286

Please send all enquires to sales@wwinengineering.com.au



W WIN ENGINEERING
5 BLAXLAND PLACE,
MILPERRA NSW 2214
PH: 612 9771 9525



ISO 9001
BUREAU VERITAS
Certification



WWW.WWINENGINEERING.COM.AU

CPAA PRODUCTS

CPAA Pump, Line and Office Copy Logbook

The Operator and Office Copy Logbooks are produced by the CPAA in order to provide a quick and easy method of maintaining the records necessary to satisfy the safety and plant maintenance requirements of regulators and other industry bodies within the concrete pumping industry. The Pump Logbooks were updated in 2010 and the Office Copy in 2012 to bring them in line with current industry standards/requirements, adding a contemporary look, before they were re-printed. Recently, the Association undertook a further review in 2015 and new and improved logbooks were released Australia wide with positive feedback rolling in. Both of the new editions can be purchased from the new one-stop e-shop on the CPAA website.

Boom/Line Safety Stickers

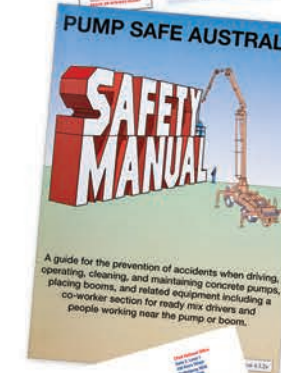
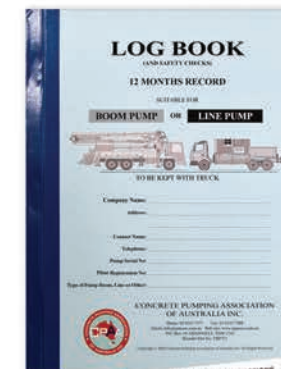
In April, a comprehensive review of all sticker packages was undertaken by the CPAA team. The work resulted in multiple changes to the stickers, which better reflected current practices and were clearer to both workers and members of the public. The new stickers can be purchased online via the CPAA website, which now sells 15 different products/services.

Safety Manuals

Working in a high risk environment such as concrete pumping has its pros and cons. One negative aspect being the risk of an accident involving a concrete pump. The CPAA, in conjunction with the American Concrete Pumping Association, has produced a Safety Manual that has been designed as a guide for the prevention of accidents around a concrete pump. The Manual includes safety information for operating and maintaining concrete pumps and related equipment. The book fits into a normal size glove box and may be used for training and induction. It also adds a touch of professionalism to your company's image, which may be the tipping point for securing an unsure client.

Safety Bulletins

In October the CPAA finalised and published its second Safety Bulletin on the hazards of Outrigger Crushing. The publication highlights to pump owners and operators the various hazards, risks and accidents that workers and the general public can become involved in by the opening of closing outriggers. These safety bulletins are available free to the public, and are uploaded on the 'Education' tab of the CPAA website.

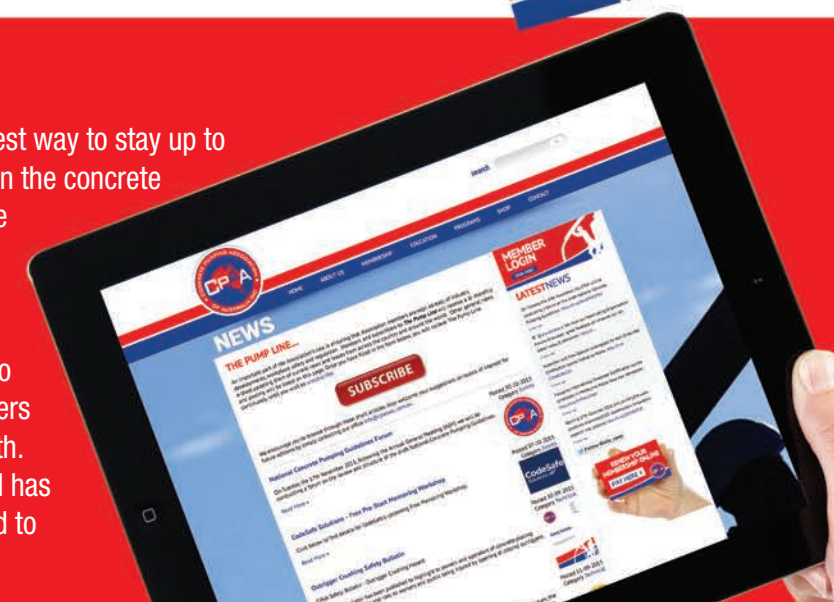


Safety Bulletin
- Outrigger Crushing
Hazard



NEWS BLOG

The Pump Line News Blog on the CPAA Website is the easiest way to stay up to date with all of the recent news, developments and trends in the concrete pumping industry, locally, nationally and internationally. The articles are also sent to all subscribers of The Pump Line e-Newsletters. The articles fall under four categories: Safety, News Briefs, Technical and Events providing a truly industry wide perspective for readers 24/7 about changes to the industry, reports from members, new projects for partners of the CPAA and events for our members to get involved with. The page has now been live for the past twelve months and has over sixty articles posted. To read any of these stories, head to the CPAA website, under the 'Education' tab.



equipcon

concrete pumping equipment

Proudly Mounted Australia's First Carbon Fibre Boom – CIFA CARBOTECH K45H



Zoomlion Finance Available
Terms and Conditions Apply

Specialising in the Sale and Service of:

- Mobile Concrete Pumps (Line and Boom)
- Trailer Concrete Pumps
- High Pressure Trailer Mounted Concrete Pumps
- Concrete Placing Booms

Contact Carlo

0417 33 77 46

sales@equipcon.com.au

www.equipcon.com.au

14 Ainslie Road Campbellfield VIC

ZOOMLION

CIFA

Authorised dealer – Australia-wide

CPAA Membership Information

The Concrete Pumping Association of Australia Inc. (CPAA) is recognised by many organisations that affect the industry such as WorkCover, Environmental Protection Authorities and Standards Australia.

Our objective is to provide a strong, unified and respected voice and to improve the professionalism, safety and quality of the industry. We are also a not-for-profit Association that relies on income from membership and the sale of products to ensure that we can continue to provide this beneficial service to members. Input and questions from members of the Association are encouraged and is vital to determine the current and relevant issues within the concrete pumping industry.

Herein lies one of the key advantages of CPAA membership where YOU as a member can have a say about the problems you face in the workplace each day.

Benefits of Membership

- Nominate up to 3 representatives to receive information circulars
- Voting rights w/right to nominate to National Management Committee
- Complimentary copy of 'Concrete Pumper's Annual Magazine'
- Free access to National Expo and Picnic
- Discounts on all products, including logbooks, Safety Stickers and Safety Manuals
- Discounts on sponsorship and exhibition with National Expo and Picnic
- Use of Association logo on company promotional material (e.g. website, vehicles etc)
- Weblink on Association website
- Access to E-Blast notifications and special circulars related to safety alerts
- Access to E-Blast advertising
- Increased professional credibility
- Regular offers/discounts to members



MEMBERSHIP CATEGORIES

Concrete Pumping Contractor

A company registered to trade in Australia who owns or leases concrete pumping equipment for the purpose of placing concrete. This type of member has full voting rights.

Manufacturer & Suppliers of Pumping Equipment

A company registered to trade in Australia who manufactures or markets concrete pumping equipment for the purpose of placing concrete. This type of member has full voting rights.

Concrete Pump Inspector and/or Operator Trainer

A company registered to trade in Australia who has acceptable qualifications to inspect and assess the condition of a concrete pump and report to the owner the recommended repairs required to comply with all the Safety Standards and Regulations or has the qualifications to carry out concrete pump operator training and assessment in preparation for operator certification. This type of member has full voting rights.

Supplier of services to Concrete Pumping Industry

A company who provides services to the concrete pumping industry in any form. e.g. Concrete mix, insurance, raw materials, tyres, advertising, management advisers etc. This type of member does not have voting rights.



INSURANCE SOLUTIONS TAILORED TO MEET THE NEEDS OF CONCRETE PUMPERS

Arthur J. Gallagher specialise in the development of leading edge insurance solutions to meet the needs of all concrete pumpers.

As part of our Motor and Liability Insurance Package, special benefits include*:

- Sum insured includes Hoses and Remote Controls
- Third Party Property Damage Cover and Third Party Bodily Injury Supplementary Cover sum insured \$35,000,000
- Australia Wide Cover
- Local claims settlement
- Public and Products Liability at \$10,000,000 or \$20,000,000
- CTP 'Greenslip'
- Designated Broker for your Account.

For an obligation-free insurance review contact:

Russell Boucher

02 4979 3350

0408 575 430

russell.boucher@ajg.com.au

David Sedgwick

02 4979 3342

0407 885 987

david.sedgwick@ajg.com.au

*Benefits are to be read in conjunction with Policy Wording and Schedule.

ajg.com.au



Arthur J. Gallagher
BUSINESS WITHOUT BARRIERS™

NEW PRODUCTS TO THE CONCRETE PUMPING MARKET



SCHWING S 28 X Truck Mounted Concrete Pump - Now With Twin Circuit Pump Kit

The S 28 X model with its compact footprint, 4 stage RZ placing boom and low unfolding height, is now equipped with twin circuit pump kit P2023-130/80, 535, RB, Cr, MPS, CE for even greater efficiency. Benefit from greater output with more precisely timed switching of the BIG ROCK concrete valve and differential cylinders for a smoother, more continuous flow of concrete with less boom bounce and longer service life of key components. Tried, tested and trusted in the S 32 X and S 36 X models for many years. The new S 28 X also features a shortened Mercedes Benz chassis for improved manoeuvrability in tight set ups and greater horizontal reach over the cab.



SCHWING S 36 X Truck Mounted Concrete Pump - on Single Steer Mercedes Benz

The S 36 X model can be registered nationally; fully loaded and fully optioned on single steer Mercedes Benz Axor at < 7t on the Front Axle and < 20t on the Rear Axle Group.



SCHWING S 43 SX Truck Mounted Concrete Pump - Generation 2 Available Now

The 2nd Generation S 43 SX sets the standard in the 40 metre boom class with its 43 metre 5 stage RZ placing boom and big twin circuit pump kit P2525-120/85, 636, RB, Cr, MPS, CE. The P2525 delivers maximum theoretical concrete output of 164m³/hr at a remarkably low 22 strokes per minute for smooth, low wear operation. Enhancements include the redesign of the rear outriggers resulting in the relocation of the water tank to the centre of the deck. Additional alloy storage compartments are incorporated with level walkways on the deck. These refinements reduce the total machine weight by > 2t. Mounted on Mercedes Benz Actros 4144 (8x4), the 2nd Generation S 43 SX weighs in under 14t on the Front Axle Group and is registrable Australia-wide.

General

All New SCHWING Truck Mounted Concrete Pumps now use the SC30 Remote Control system. The transmitter is 30% lighter and fleet owners can swap the SC30 transmitter between machines for added versatility. The updated local control panel is configured under the rear RHS steps with all local controls and auxiliary service functions neatly arranged in a central ground level location.



CPAA in Melbourne for Concrete 2015

For the first time, the CPAA's new Conference display was revealed at the Concrete Institute of Australia's Biennial National Conference, Concrete 2015.

Held at the Pullman Hotel, Albert Park, Melbourne from August 30 to September 2, 2015, the exhibit included displays of safety manuals, stickers, logbooks and previous editions of the magazine.

An iPad was used to feature the Association's website, and proved to be a useful tool in demonstrating to delegates how simple it was to find products, members and safety information on our website.

During the Conference, many domestic and international delegates were keen to know about the uses and benefits of the products displayed.

Craig Heidrich and staff from HBM Group, Carol Wilson, Aiden Chilcott & Lauren Hatton, manned the booth over the three-day event.

Conference highlights included

- 7 keynote speakers
- 600+ registrants networking, including 140+ international delegates
- 37 exhibiting companies, 18 sponsors
- 162 technical papers.

The theme of the Conference was "Research into Practice", covering materials, research, design, construction and innovation. Concrete 2015 provided a forum for the sharing of ideas and experience through the formal presentations, industry displays and contact between delegates. It was the concrete industry's pre-eminent technical and social event in the southern hemisphere for 2015.

Concrete 2015 proved to be a great opportunity to promote the Association; further educate industry personnel and to increase our current database of contacts. We look forward to upcoming Conferences in 2015 and 2016.



Concrete 2015



Concrete 2015



Gala Dinner



CPAA Team



The Girls!



Alone we can do so little, together we can do so much



Putzmeister

Perform at a higher level

Putzmeister concrete pumps cover all fields of application, offering a wide range of high quality truck mounted boom pumps, trailer pumps, placing booms, mortar, plaster & grout pumps & Telebelts. With features such as Ergonic Boom Control (EBC), One Side Support (OSS) & frequency hopping radio control, and a long standing international reputation for innovation, performance, quality and design, it's easy to see why Putzmeister are the first choice in concrete pumping for everyday jobs right through to Australia's largest projects.



Keep everything under control with Putzmeister Steady Hose end hose. This new hose has been developed to offer reduced risk of injury, significantly less deflection, gentler work at the end hose and improved wear behaviour when concreting with placing booms.

Putzmeister offers a wide range of high quality, reasonably priced, economical and safe spare parts and concrete pumping accessories to ensure you get the most out of your machines.

Esser Twin Pipes offers pipeline that outlasts all others – whatever your concrete pump brand! The hardness of Esser pipes is constant over the entire pipe length so service intervals can be scheduled more easily, and all components are designed according to OEM manufacturers standards, including weight specifications, to ensure no machine positions are compromised. The special hardening and high-quality welding processes ensure Esser pipes achieve a service life up to 25% higher than other two-layer pipes in the market (ask us for Australian examples).

Proven performance



Con Forms Ruff-Neck Reducing Boom Hose is guaranteed to outlast any others on the market! The original and the best, it offers smooth, controlled concrete flow that virtually eliminates splatter & reduces boom bounce, with no exposed wire reinforcement, 85 bar working pressure and no need for steel reducer and couplings, Rams Horn or double 90° elbows. Con Forms is the premier global provider of abrasive resistant pipe, wear parts and systems to the concrete pumping industry.



Widely acknowledged as the highest quality, best value concrete placing hose available, Trelleborg hoses come in a range of sizes with steel or synthetic reinforcing. They are highly abrasion resistant for extended service life, flexible & easy to handle, robust in construction to withstand heavy compressive loads, and easily cleaned by reverse pumping.



From your everyday job to Australia's largest projects - Servicing businesses Australia wide

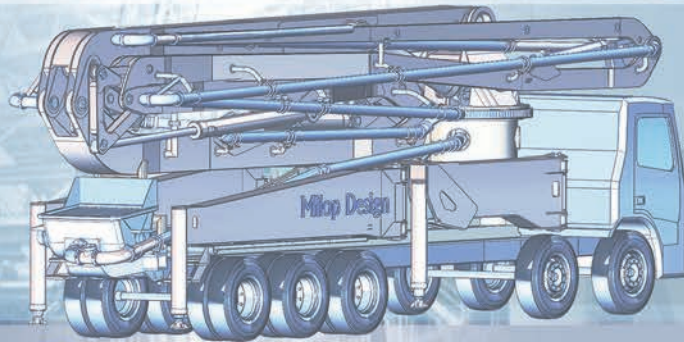


At CPE Machinery we offer a complete solution to your concrete pumping needs, supplying world-renowned, top quality concrete pumping machinery, delivery hoses, pipeline, spares & accessories, alongside boom inspection & repair services, technical support, training and project consultation, to ensure you make the most of your equipment.

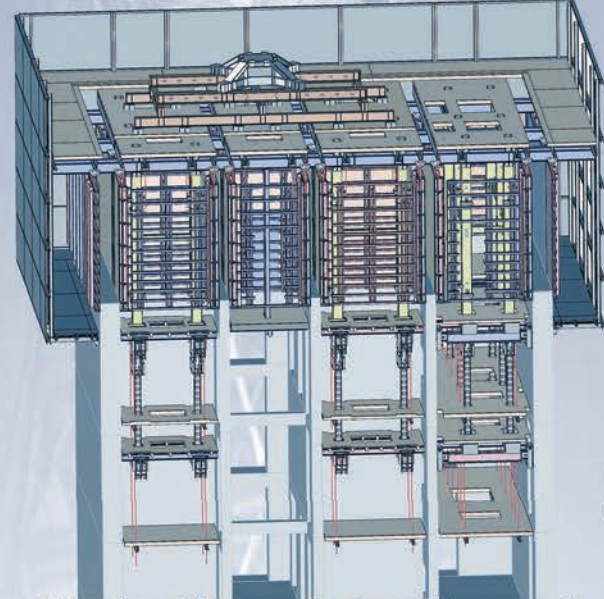
Solutions Delivered | 1800 307 115 | cpemachinery.com.au

Milop Design and Consulting Pty Ltd

Research, development, analysis and design of heavy construction and concrete pumping machinery, tower cranes, lifting hoists and other mechanical equipment



Tower cranes (AS 1418, design, modification, analysis)
Mobile drilling rigs for mining exploration
(AS and API standards)
Pressure vessels design (AS 1210 and ASME)
Mining industry (underground equipment)
Lifting Equipment (design and verification)



Structural formwork, Jump form system
selfclimbing, design and analysis.

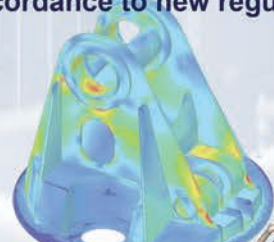
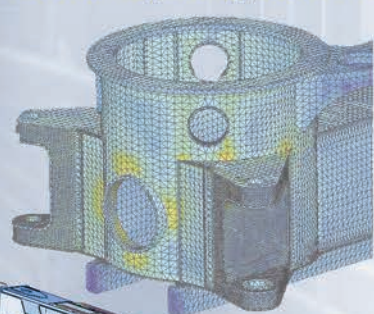
Our engineers have 30 years experience in development and creatively applying their understanding of engineering principles. They have several patented solutions in cranes industry concrete placing boom and construction equipment.



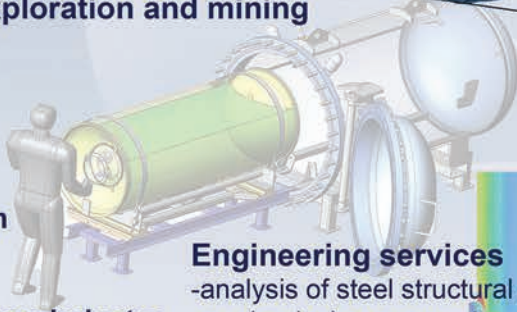
Professional Engineers
Members of Institution of Engineers Australia

For the concrete pumping equipment
Milop engineers are your experts for

- analysis, design and modification concrete boom pumps, tower placing booms and support steel structures
- inspection, certification and assessment for continued operation
- testing and certification for "one side operation"
- machine failure analysis
- design verification of the truck concrete boom pump and tower placing boom in accordance to new regulation



Drilling rigs for mineral
exploration and mining



Engineering services

- analysis of steel structural and mechanical components using the finite element method and conventional calcs
- solving thermal problems using classical methods and finite element analysis
- expert witness services

To learn more about our service, or informally discuss your technical issue with our engineers call us from 9 am - 6 pm EAT Mon - Fri

Milop Design and Consulting Pty Ltd
PO Box 3345, Wetherill Park, NSW 2164
ph. (02) 9823 4818, fax (02) 9823 8578
mob. 0413 424 819
milop@tpg.com.au; www.milop.com.au

INDUSTRY STRATEGIC PLAN

The National Management Committee of the Association approved an Industry Strategic Plan, mapping out three (3) years (2014 - 2016) to determine the actions required to manage membership development, education, information dissemination and engagement with industry stakeholders.

The Strategic Plan identified the following overarching organisational objectives as priorities over the next three (3) years:

Financial and Organisation Sustainability

To invest in strategic projects that support targeted membership revenue growth whilst building the Association's positioning profile and providing long term financial and organisational sustainability.

Goals:

- Evaluate membership categories, grades and sponsorship opportunities offered to our industry
- Grow sales, expand range and evaluate other quality 'Products and Services' offered to our industry
- Implement e-commerce enabled website to streamline online orders placed by users
- Grow current membership by 100% over the next 3 years.

Building our Profile and Positioning

To undertake activities that enhance the profile and positioning of the Association to signal to wider industry stakeholders that our 'doors are open' for business'.

Goals:

- Promote the association is 'Open for Business' and engaging with members, industry stakeholders and government bodies
- Develop, Consult and Publish Technical information relevant to members, e.g. National Concrete Pumping Industry Guidelines

- Build strong national leadership role and undertake projects which enhance the industry standing, eg: Represent member's interests with key bodies such as Australian Standard 2550.15.

Membership Growth and Benefits

To support membership growth and development as well as support adopted programs because it is vital for the organisation to develop and enhance relationships with key stakeholders at all levels of the membership.

Goals:

- To build our capability to reach concrete pumping related businesses and knowledge of operators within the industry
- Engage, communicate and update members on relevant industry topics using effective and efficient systems
- Investigate value added benefits for members. E.g. 'Concrete Pump Major Inspection Verification Scheme'.

The Strategic Plan for 2014-2016 focuses on creating and implementing initiatives that meet these objectives in a manner that allows the organisational goals to be met.

Do you or a colleague have the skills, interest and time to be a Nominated Representative or Reference Group Member?



Representing the concrete pumping industry to Australian Governments and other stakeholders to ensure the best outcomes for members in terms of the sustainability of the industry and the safety of employees nomination and representation of members to Standards Australia committees is an important function of the Concrete Pumping Association of Australia since its formation, some 20 years ago. The Association is seeking three Nominated Representatives for the review of AS2550.15.

The positions we are seeking to fill are;

- Nominated Representative for Concrete Pump Operator/Owner
- Nominated Representative for Concrete Pump Inspector/Assessor and
- Nominated Representative for Concrete Pump Manufacturer, Distributor and or Supplier.

Each Nominated Representative will be supported by up to ten (10) Reference Group Members to act as the voice for each respective interest group within the concrete pumping industry.

For more information or to nominate yourself, send us an email or call us on 1300 136 636.

CONCRETE



PUMP SUPPLIES

www.cpspumps.com.au

BEST CUSTOMER SERVICE
Plus a range to suit all applications



NEW TRUCK MOUNTED BOOMS SUPPLIED ON VEHICLE OF YOUR CHOICE

SPARE PARTS FOR MOST BRAND PUMPS

CONTACT:

Phillip 0418 882 233
phillipsworld@gmail.com
PO BOX 356 Camden, NSW 2570

JOINED THE CONCRETE PUMP INDUSTRY IN 1986

TWIN-WALL PIPE SPECIALISTS

MODEL RANGE
21M - ZX 4-STAGE
28M - ZX 4-STAGE
32M - ZX 4-STAGE
36M - ZX 4-STAGE
36M - ZX 5-STAGE
37M - ZX 5-STAGE
40M - ZX 4-STAGE
41M - ZX 5-STAGE
45M - ZX 5-STAGE
48M - ZX 5-STAGE
50M - ZX 5-STAGE

CALLING ON MEMBERS TO HELP SHAPE THE FUTURE OF AS2550.15

AS 2550.15-1994, Cranes-Safe use, Part 15: Concrete Placing Equipment.

Under the guidance of the National Management Committee and the adopted strategic plan, the Association has been working closely with Standards Australia to develop a project proposal to re-establish a comprehensive review of AS 2550.1-1994, Cranes - Safe use, Part 15: Concrete Placing Equipment.

This proposal relates to the well-overdue review, (more than 20 years) which will address:

- General document-wide consistency check for terminology use. Definitions for types of pumps
- Definition for "competent person"
- Where appropriate, additional clauses relevant to the various types of pumps, e.g. line pump, boom pump, separate placing boom
- Alignment of inspection and maintenance requirements with international manufacturer concrete placing equipment, requirements and international standards
- Where appropriate, consequential amendments and alignment to AS 2550 series
- Where appropriate, consequential amendments and alignment with various federal and state WHS legislation, codes of practice or guidelines
- Where appropriate, alignment with international best practices that are adopted in codes.

Craig Heidrich, CEO on behalf of the Association prepared a project proposal to revise AS 2550.15 for the consideration by Standards Australia and wider industry stakeholders. The proposal was recently reviewed during a forum hosted by Standards Australia. As part of the project proposal process, the Association must provide evidence of widespread stakeholder support for the proposal.



BUILDING CONSTRUCTION & PROJECT
MANAGEMENT SERVICES
TECHNICAL ADVISORY & CONTRACT ADMIN

ANTHONY MATTAR
DIRECTOR

P.O. BOX 20, BEVERLY HILLS NSW 2209
+61 458 307 997
ANTHONY@SUPERRAIN.COM.AU

INDUSTRY NEWS - BERRY BYPASS

With the Gerringong upgrade complete as of August 20, 2015, the \$580 million construction of the Foxground and Berry bypass has broken ground, with work on the project starting in January this year. Weather permitting, the road is expected to be open to traffic in mid-2018.

If you are lucky enough to reside on the South Coast of NSW, then you have most likely visited the beautiful, quaint town of Berry. Known for its picturesque scenery and historic culture, access to the region is limited to a winding single-lane road. One aim of this project is to minimise travel times, whilst improving safety for the motorists who travel in the region. The project scope has estimated a seven minute reduction in travel times through the region, and an estimated 64% reduction in crashes on the Princes Highway in the construction area. As a farming region, it is very agriculturally and environmentally aware, so it is fitting that the

11.6km bypass will utilise by-products of the steel production industry (slag) as a substitute for Portland cement. The use of these secondary materials in the construction of the road surface will reduce demand on resources, and is not only cost effective, but performance competitive.



The project will deliver a four-lane highway, with two lanes in each direction and median separation between Toolijooa Road and Schofields Lane. The bypass is expected to create 500 jobs as well as having great economic and safety benefits for the area. The project is also designed to improve flood immunity and protect local fauna with higher numbers of wildlife crossings to be included in the bypass.

NEW EMPLOYEE - LAUREN HATTON



When one door closes another opens, and with the departure of Olivia Yeatman we welcome the newest member of the CPAA team, Lauren Hatton. Lauren is currently studying a Bachelor of Law/Commerce at the University of Wollongong. Lauren has been employed

as Marketing Coordinator and has already worked on numerous projects such as the Conference Display, Shotcrete Certification Course and even this magazine, writing both the Shotcrete Report and The Kingdom Tower article. In the coming editions, we will be reading many more articles that she has penned.

15% Discount for CPAA members

Valid until June 2017

“I need...

Log Books BINDERS Training Manuals NCR

a new logo flyers posters

an online store banners

direct mail corporate video

ENEWSLETTERS QR codes

annual report greeting cards

WEBSITE business cards brochures”

“No problem, when do you need it by?”

If the question is
print,
design
or websites
the answer is

sn@p

Wetherill Park

Unit 1a / 31 Elizabeth Street
Wetherill Park NSW 2164
T: (02) 9609 5577
E: wp@snap.com.au
www.snap.com.au

CONCRETE PUMPING IN THE 70'S – IAN HAY



Transcrete began in 1967 when concrete pumping was a totally new concept of moving concrete from Transit trucks to formwork through a 100mm pipeline. Nobody knew much about the concrete mix designs or pressures required to pump concrete.

1971

Transcrete introduced the first truck mounted model 854 pumps using a full torque split tail-shaft PTO with a 180 HP diesel engine. Output was increased to 76 Cubic meters per hour.

1974

By 1974 concrete pumping become the accepted method of placing concrete. Jobs became so small that it took more time to clean up the pump and remove concrete left in the large plug valve models than pump the job. To meet this new market requirement, Transcrete engineers developed the "Monoline" model 636.

1975

This pump is Transcrete's first production S-tube pump. Renamed as the Sidewinder model, production started in 1975 and the pump was engineered so it could be exported to the United States (US). The Sidewinder took the US Market by storm. Transcrete airfreighted 20 Sidewinders per month to the Los Angeles Dealers, Bennett Brothers.

1979

A UK manufacturing license was granted in 1979, the Sidewinder was produced in trailer and truck versions.



THE FUTURE OF CONCRETE PUMPING

The possibilities for the use of concrete are becoming seemingly limitless, with new applications and new methods of creation making headlines.

In recent news, we have seen 3D printing take a giant leap forward with 3D printers now spreading across multiple industries, from food production to construction. 3D Printing is the process of constructing a three-dimensional object from a digital model. The process involves adding successive layers of material on top of one another, using a computer system to create a physical product.

In 3D printing buildings, or 'building printing', cementitious material is pushed through piping similar to that of a concrete pump, but the material is thicker and uses the assistance of a computer system to place the mixture on top of previous layers, in the same way a brick wall gains height.

With technologies such as this forecasted to become the future method of concrete construction, we must question how these technologies will either provide opportunities for the concrete pumping industry or be its downfall.

Dr. Hank Haesuler, senior architecture lecturer at the University of New South Wales believes that "It is definitely going to happen...I think in five to ten years we will see more and more 3D printed housing construction and nodes." Others believe that the technology is still decades away, but one thing is for sure, tests have started and show no signs of slowing. The most recent buildings that have been created include a five-story apartment and a hotel in Philippines which took only 100 hours to complete.

(Shown below)



CONCRETE PUMP SUPPLIES

Phillip Wilson joined the Concrete Pumping Industry in 1986 working with Mobile Concrete Pumping in Sydney.

He worked in all aspects of the industry with Mobile Concrete Pumping including pumping on site and sales/marketing roles. As business expanded the company began to build and export pumps around the globe. Phillip travelled extensively to promote the company's products, which were well accepted.

As time progressed he opened his own company – “Concrete Pump Supplies” to provide a more personalised service to the Industry. Since 2007 CPS has been supplying quality concrete pumps to the local market. Located in Camden, NSW they are able to supply parts for most brands of pumps.



AN ISSUE WITH NO CONCRETE SOLUTION KINGDOM TOWER

Set to be complete in 2019, The Kingdom Tower in Saudi Arabia will be erected sustainably with an expected lifespan of over 100 years.

Whilst the final height of the structure has not yet been released, it is rumoured to be the first structure in history to reach the 1km mark. The building was initially designed to be one mile (1.6km) tall, however after consideration of the geography this plan was ultimately abandoned. The mega structure will still be at least 180 metres taller than the existing record holder, Dubai's Burj Khalifa, and be made up of over half a million cubic meters of concrete and around 80,000 tons of steel.

The construction of the building has begun with the foundations of the building now finished. Although it is now reaching into the sky a big problem is yet to be solved. “How do we get the concrete 1km up without it setting in the pump?” The Burj Khalifa faced similar problems due to the height and the climate of the area. In that construction, concrete was being poured at night due to the excessive temperatures during the day preventing the concrete from setting. A small proportion of the water used in the mixture was replaced with ice, which would maintain a suitable temperature while the mixture was transferred to the site.

Multiple solutions have been proposed for use in the Kingdom Tower, including freezing the wet concrete and hauling it up by crane. Another idea is to pump into large pools which lie at multiple levels up the building, acting as stepping-stones for the concrete. A concrete solution is yet to be decided upon.

The construction of this structure will be heavily reliant on concrete as a foundation element, which will be utilised at various stages throughout the build. Construction in the Middle East is currently trending towards the use of substitutes for Portland Cement which has both economical and environmental benefits.

The mega structure contains a concrete core spanning several metres in diameter throughout the majority of the building and concrete foundation piles stretching three metres in diameter and are rumoured to delve up to one hundred and ten metres into the ground. The substantial foundations are required to protect the tower from erosion from the nearby ocean as well as to ensure the stability of the soaring structure, which has proven to be necessary after other structures in Dubai have been subject to sinking or movement within their sandy surrounds.

The three-sided shard is also aerodynamically designed to fight wind as well as gravity, as it stretches 252 floors into the clouds. Every aspect of construction has been carefully considered including its impact on the environment, and setting within the city. The building has been erected on a plinth, melting into its surroundings in a nuanced and thoughtful way, allowing numerous transportation routes to travel around it. A high-spec engineered glass has been utilised to not only reduce heat gain within the building, but to reduce glare for surrounding properties.

This construction giant is set to break numerous records in building and materials, so keep your eye out for updates over the coming years.



Celebrating 45 Years



BOOM PUMPS

LINE PUMPS

STATIONARY PUMPS



POWERCRETE 51M

- 200 meter cube /hour
- 6" hydraulic cylinders
- 10" delivery cylinders
- 8 foot stroke
- REXROTH hydraulics
- ESSER900 twin layer pipe
- under 39 tonne gross mass
- installed on DAF CF85 8 x 4 truck. Yes you can have now a 51M reach Boom Pump installed on 4 axle truck



POWERCRETE LINE PUMP HIGH PRESSURE

- 150 meter cube /hour
- 129 bar concrete pressure
- 6" hydraulic cylinders
- 9" delivery cylinders
- 8 foot stroke
- REXROTH hydraulics

POWERCRETE, built to last

31 Kurrara Street
LANSVALE NSW 2759

Ph: 02 9724 3222
Fax: 02 9728 2898

Web: www.powercrete.com.au
mail: power@powercrete.com.au

POWERCRETE A LIFETIME OF EXPERIENCE

INTERNATIONAL MEMBER - HAGINIA HIRE

Haginia Hire Ltd is the largest plant & equipment Hire Company in Port Moresby. The company has a reputation for being the most reliable provider of plant & equipment in Papua New Guinea.

The principal of Haginia Hire, Graeme Grady has an intimate knowledge of the day-to-day issues that his customers in the construction industry face. As such, Haginia Hire prides itself on having a well-maintained fleet of serviced equipment that meets the daily needs of its customers. Graeme is able to offer the complete package to local contractors in this challenging region.

Concrete pumps are a large part of Haginia Hire's business. Through its relationship with Meales PNG, Haginia Hire operates three mobile concrete boom pumps and two trailer pumps.

Recent jobs completed by Haginia Hire & Meales PNG include the Kookaburra Flyover project (below).

Haginia Hire & Meales PNG provide specialist concrete pumping equipment, services and knowledge to the resource sector, contractors of large scale development and infrastructure projects in Port Moresby, Papua New Guinea.

Testimonials

"I would like to take this opportunity on behalf of Smithbridge to thank Meales / Haginia for your service on the Kookaburra St. Viaduct project. Meales/Haginia proved to be reliable and professional and we look forward to working with you on the next project."

"Thank you so much for your work today. Your crew impressed all our staff. It so happened we had an ExxonMobil and Wood Group management safety walk at the same time and it was noted that all the work was handled very professionally. Thanks again."

Portion 450, Tamara Rd, 6 Mile, Port Moresby, PNG
Ph: (+675) 325 8131



ADVANTAGE CONCRETE PUMPING

A FIVE YEAR JOURNEY

BY NATHAN TOLHURST

"Within weeks of employment as a Concrete Pump Operator, I knew that I'd found my career path. I believe that concrete pumping requires strength and someone who's not afraid to get dirty; both requirements are right up my alley. Straight away I knew I wanted my own truck and to be my own boss. I just had to wait for the right time and opportunity.

Fast forward five years to 2015 and it all came together, Advantage Concrete Pumping was born. My family truly supported me in this endeavour and it has been a solid team effort. My old man took six weeks of long service leave to help get the business on its feet and underway. After that, my brother jumped on board and together we got the job done!

Three days out from picking up the new 'baby' I felt a bit nervous. But there's nothing quite like hard work and once the work started flowing the nerves were gone. So far we have done a bit of everything including what no one else wants to do such as pumping up goat tracks on cliffs. You name it, we'll do it! So far we've mostly had residential work but we're happy and prepared to do anything.

The best part of concrete pumping is the camaraderie and mentoring that I've received from other pump operators. They've given me advice in regards to customers, truck assessments, JSA's/SWMS's, business tips and even job opportunities. Another helpful tool that has aided our success has been using Xero. The application has enabled me to invoice easily from my mobile and follow up on payments while on the road between jobs. Getting away from paper invoicing was a stressful adjustment at first, I expected a lot of resistance from concreters as some can be "old school" but I believe they are all used to it and prefer it now.

In the future we'd like to expand our portfolio and become more involved in commercial jobs. It's early days, but we are looking to grow the business, so hopefully we will have another 'baby' on the way soon.



PHOTO: Nathan and brother Jordan of Advantage Concrete Pumping

GUARDIAN CONSTRUCTIONS - "HONESTY, INTEGRITY, RELIABILITY & CARE"

Guardian Constructions is a family owned Concrete Pumping company located in Victoria on the Mornington Peninsula.

Director Glenn Porter began in the Concrete Pumping Industry in 1998 operating pumps for various companies in Cairns & Melbourne. In 2003 Glenn & wife Danielle purchased their first Pump and with it, the company was born.

Deciding on a business name wasn't difficult. Glenn & Danielle's key aim was to ensure that it represented their core values of honesty, integrity, reliability & care. Their priorities being of the customer, 'care' of their staff and 'care' of their machines to provide a thorough and reliable service. This manifested in Guardian Constructions.

As soon as finances would allow, the original pump was upgraded. In concrete pumping you are only as good as your machine so a brand new truck represented reliability and a step towards larger projects and long-term customer relationships. As Guardian grew so did its need for reliable employees. In 2011 Danielle took a step back from her career as a Registered Nurse to obtain her Boom Pump & Truck licenses. After only being involved in the management side of Guardian, she enjoyed the challenge of becoming a 'hands-on' Boom Operator and treading a completely new path.

Over the 12 years Guardian has been trading they have enjoyed steady growth, servicing various projects ranging from small domestic jobs to multi-level Commercial development sites. Recent works include projects for Aldi, South Eastern BMX Club, Hazeldenes & Gourley Transport.

Guardian has a team of professional, experienced pump operators and "hoseys" that are the backbone of the business. Most of their staff have been with the company long term and are more akin to family members than employees. At Guardian, honesty & hard work work is rewarded and that is reflected by their employee's dedication and love of their job.

Guardian has been a rewarding journey for Glenn & Danielle. They have a great group of professional employees who keep each other motivated and focused. Business always has its challenges, some days are better than others but throughout it all, they have found that the most important thing is to share a laugh at the end of it all it may be the only thing that keeps you sane.





Putzmeister

CPE Machinery, also known as Putzmeister Australia, supply and support a wide range of specialist machinery, parts and accessories used in construction, tunnelling and mining. Their focus is on providing top quality products, at competitive prices, to ensure you get the job done right on site, in the quickest most cost effective way.

With over 40 years experience in the concrete pumping industry, and a reputation for providing the best solutions in the market, CPE Machinery is an Australian owned and run business, servicing the whole of Australia. Best known as the experts in all things Putzmeister, they also supply a wide range of parts suitable for any brand of concrete pump, including World leading pipe and hose by Trelleborg, Esser Twin Pipes and Con Forms.

They proudly supply and support a wide range of market leading machinery, parts and accessories including:

- Truck mounted boom pumps
- Trailer pumps
- Placing booms
- Mortar plaster & grout pumps (mixer, worm and piston pumps as well as pneumatic screed conveyors)
- Shotcrete, refractory and underground machines
- Telebelts
- Hose
- Pipeline
- Other concrete pumping accessories.

For more information on brands visit the website or refer to their advertisements within this magazine.

Australia's Leader in Concrete Pumping Accessories since 1991



MINING TUNNELING PUMPING

- QUALIFIED ENGINEERS
- FACTORY FACILITIES
- IN-HOUSE DESIGN
- IN-HOUSE PRODUCTION
- RESEARCH AND DEVELOPMENT

FOR FURTHER ENQUIRES PLEASE CONTACT:
SALES@WWINENGINEERING.COM.AU



equipcon

– A FAMILY OWNED COMPANY

From its humble beginnings in 1976 as a one-pump operation working in the field, this father and son business has evolved into one of the largest suppliers of concrete pumping equipment in Australia today. Over the last 40 years the family has worked in, on and around concrete pumps, reaching heights and pumping volumes of concrete never seen before. This family was born with concrete flowing through their veins, and they have set the standard for what the concrete pumping industry looks like today.

Equipcon is now an authorised dealer for Zoomlion CIFA concrete pumping equipment, and has been supplying the country with high quality machinery and spare parts since 2004.

At Equipcon they believe that safety should always come first, which is just one of the reasons they prefer Zoomlion CIFA to other products on the market. Zoomlion CIFA machinery is user-friendly, and offers unique safety features not seen in other equipment. Managing Director, Carlo Guardiani, aka 'Guru',

has acted as both mentor and friend to individual operators, guiding them towards the right machinery for their individual needs.

Equipcon is the most progressive concrete pumping equipment supplier in Australia today. Not only do they sell concrete pumping equipment, they can also service and repair any and all of your concrete pumping machinery. They offer quarterly and annual inspections, as well as conduct six-yearly strip down inspections that are then certified by an independent engineer. And best yet, you track the progress of your asset online, step by step! So, if you're looking to buy a small pump to get your job done better and faster, or you're dreaming of a concrete pumping fleet to rival all others, look no further than Equipcon. From your smallest household job to your multimillion-dollar projects like shopping centres and high-rise buildings, Equipcon has a pump for you.

Make Equipcon your preferred dealer today, find our details in our ads throughout this Magazine!



- Established leader in the concrete industry with over 20 years experience servicing the construction, and mining industry.
- Most diverse range of concrete pumping accessories, aftermarket spare parts and concrete equipment in the industry.
- New pumps delivered and assembled in Australia, capacity ranging from 10-80 cubic metres per hour with guaranteed performance.
- Our products are manufactured under BQVI Certification ISO:9001:2008

Enquire Today at: sales@wwinengineering.com.au
ADD: 5 Blaxland Place, Milperra, NSW 2214
PH: (02) 9771 9525 FAX: (02) 9771 9252
QUALITY SERVICE VALUE

WWW.WWINENGINEERING.COM.AU



STAY CONNECTED: FACEBOOK & TWITTER

The CPAA Facebook page has been a huge success over the last year.

The ability to communicate with members quickly and spread updates to over 1,200 followers of the page has enabled the CPAA to be truly involved with members.

Twitter: www.twitter.com/info_cpaa
Facebook: www.facebook.com/cpassoc



2016 CONCRETE PUMPER'S ANNUAL MAGAZINE ADVERTISING

Did you miss out on advertising in this year's Magazine?

That's ok; the 2016 Concrete Pumper's Annual Magazine Advertising Expressions of interest are open now! Call us on 1300 136 636 or email info@cpassoc.com.au for more information. Remember, the early bird gets the worm!



Getting finance
through your
bank as **hard** as
concrete?



- + Specialists in equipment finance
- + Competitive rates
- + Offices Australia-wide
- + Easy 'end to end' process
- + Pre approved funding limits arranged
- + 25 year track record

TALK TO
MICHAEL RYAN
0417 279 891
michael@finlease.com.au
www.finlease.com.au

& faster
better than a bank
^

finlease+
your equipment finance partners

RAPIDCRETE

PTY LTD

CONCRETE PUMPING

Based centrally in North Melbourne, Rapidcrete has a modern, well-maintained, reliable fleet of concrete pumps. They offer a versatile service to suit any commercial, industrial or high-rise project. They have also successfully completed multiple high profile projects to the complete satisfaction of their Clients.

RECENT PROJECTS

- Melbourne Convention Centre
- 700 Collins Street 18 floors
- Watergate apartments 20 floors
- Victoria Point 42 floors
- Eastlink Project
- Princess Freeway Point Cook
- Alfred Hospital
- Royal Women's Hospital
- Waterfront City Docklands
- The Advertiser building Adelaide 18 floors

OUR FLEET

- 52 metre boom
- 6 –stage 46m boom pump first in Australia
- 48 metre boom
- 42 metre boom
- 37 metre boom
- 34 metre boom
- 31 metre boom
- Line pumps
- Static pumps
- High pressure static pumps x 9
- Tower booms x 12-28m self climbing

105 Laurens St, North Melbourne 3051 | Mob: **0438 770 360**
Fax: **03 9329 1622** | Email: mboyer@rapidcrete.com.au

MICHEAL J WHERRITT
Mobile 0412-248-997 ph/fax +61-2-65532006



Certified Boom Inspections

CERT 4 TAE 40110

- Schwing & Putzmeister Factory Trained
- Over 35 Years of Experience
- VOC (verification of competency) Concrete Pumps
- Experience with all Makes and Models of Boom Pumps
- Insurance Assessments, Valuations, Evaluations
- Operator Training all size Booms
- Certified Crane Inspector
- Application Engineer

Email: mjwherritt@bigpond.com
www.concretepumpersworld.com.au





Building with strength, performance and passion.

Holcim is one of the world's leading construction materials companies, delivering cement, aggregates and concrete in over 70 countries. With strength, performance and passion we have been supporting Australia's construction industry for the past 100 years.

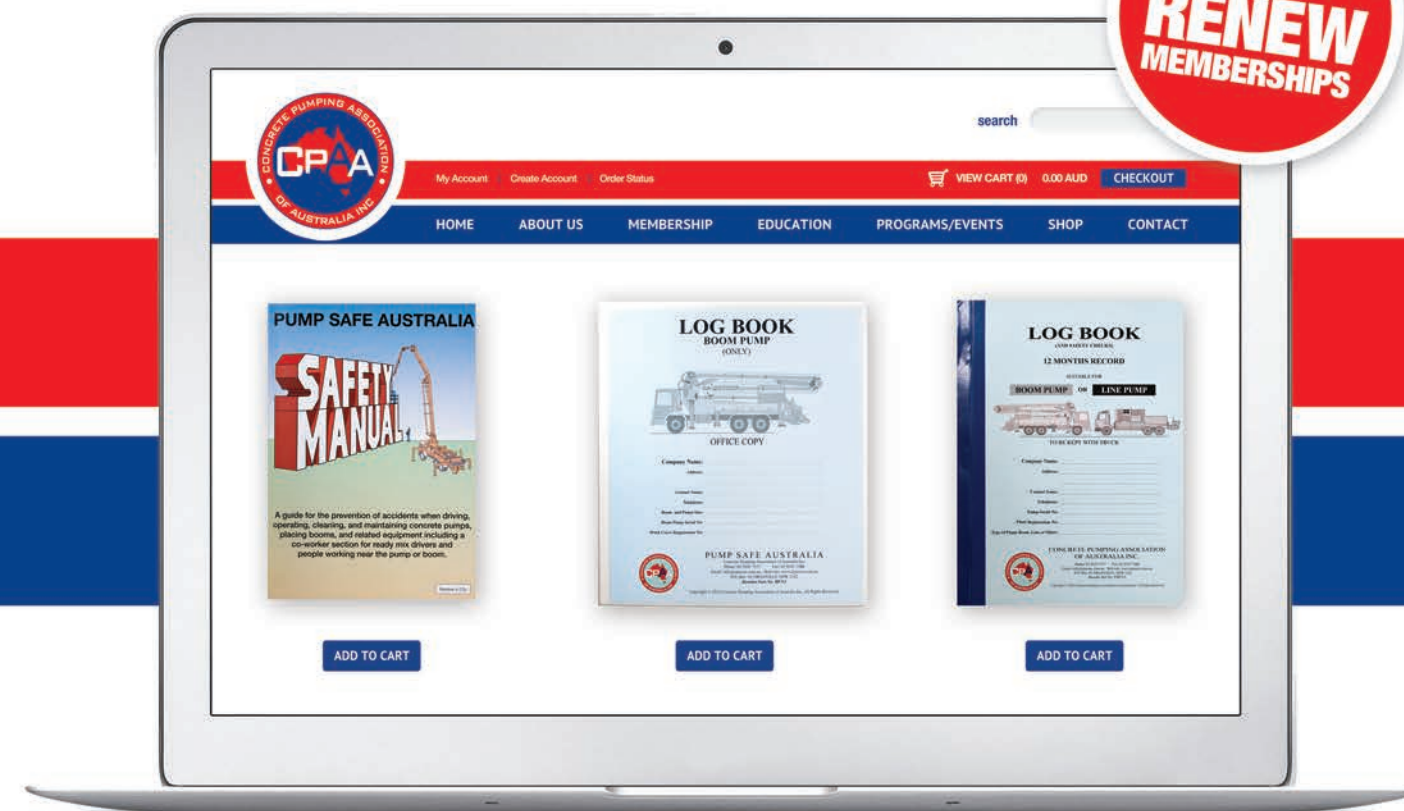
Previously known as Readymix in Australia our products have built some of our country's most iconic landmarks from major infrastructure, civil and mining projects right through to residential. Our 3,000 people located at 300 sites help us deliver. With strength, performance and passion.

www.holcim.com.au | ph 13 11 88



**ONLINE
SHOP**

**BUY+
RENEW
MEMBERSHIPS**



www.cpassoc.com.au



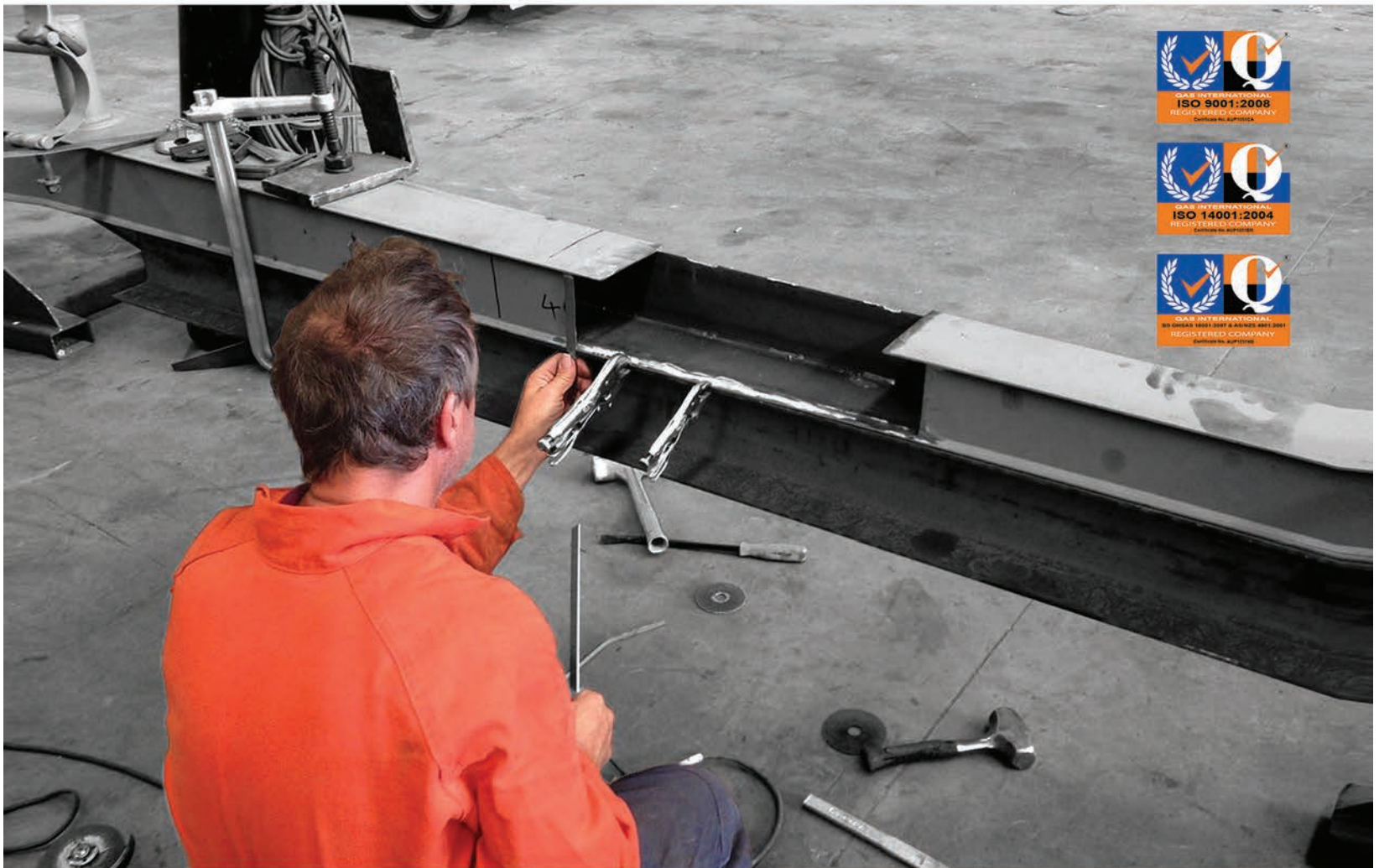
Strength. Performance. Passion.



equipcon

concrete pumping equipment

You Operate It; We Fix It



We Service and Repair any Concrete Pump, as well as:

- Boom Section Repairs
- Electrical and Hydraulic Diagnostics
- Annual Inspections and Complete Safety Checks
- Boom Strip Down and Certification

Contact Carlo

0417 33 77 46

sales@equipcon.com.au

www.equipcon.com.au

14 Ainslie Road Campbellfield VIC

Brands We Service



SCHWING

CONCORD

JUNJIN



ZOOMLION

SERMAC

CIFA



Equipcon implements an Integrated Management System, certified by QAS